

# RPEM SERIES

Lower & Center Back Mount  
Gauge, Steel Case, Multi-Purpose  
1-1/2" & 2" Dials

## OILFIELD GAUGE DIVISION

### Severe Service Gauges

For sales, distributor or corporate information, please contact us.

Post Office Box 5956

Shreveport, La. 71135, USA

P. (800) 523-4055

P. (318) 747-0444

F. (318) 747-0645

[sales@regulatorparts.com](mailto:sales@regulatorparts.com)

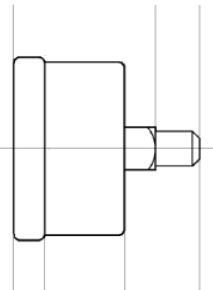
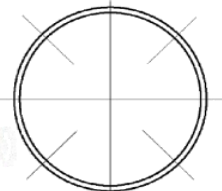


OILFIELD GAUGE  
DIVISION

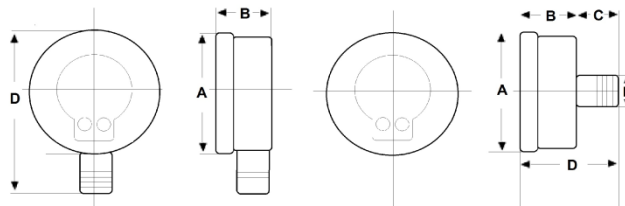
The RPEM series gauges were designed as a durable, economical gauge for multiple applications throughout industries such as oil & gas, manufacturing, plumbing contracting, and many others. The RPEM series are typically used for commercial and industrial pneumatic & hydraulic systems, heating & air systems, tanks, compressors, O.E.M. replacement & more. Suitable for air, water, oil, gas & other media compatible with brass, the RPEM series will meet the needs of most general applications.

### SPECIFICATIONS:

- Dial Sizes: 1-1/2" or 2" Available
- Connections: 1/8" or 1/4" (M)NPT
- Black Steel Case
- Polycarbonate Lens
- Chrome Friction Bezel Ring
- Blue & Black Markings on bright white Dial
- Phosphor Bronze Bourdon Tube
- Brass Socket & Movement
- Dry (Non-Fillable)
- Accuracy: 3-2-3%
- Dual Scale: PSI & BAR (x100=kPa)
- Optimum Range 50-75% of gauge scale
- Temperature: -30°F to 160°F



Dimensional Data						
DIAL SIZE		A	B	C	D	E
1.50" (40mm) CBM	In	1.66"	0.975"	0.54"	1.515"	0.125" (M)NPT
	mm	42.16	24.77	13.72	38.48	
2.00" (50mm) CMB	In	2.07"	1.03"	0.83"	2.90"	0.125" (M)NPT 0.25" (M)NPT
	mm	52.58	26.16	21.08	73.66	
2.00" (50mm) LM	In	2.07"	1.03"	0.83"	2.86"	0.25" (M)NPT
	mm	52.58	26.16	21.08	72.64	




Model Number & Ordering Information					
Range in PSI (Bar)		1-1/2" X 1/8" CMB	2" X 1/8" CMB	2" X 1/4" CMB	2" X 1/4" LM
0/30 (0-2 Bar)		RPEM1400	RPEM1402	RPEM1403	RPEM206
0/60 (0-4 Bar)		RPEM1401	RPEM1404	RPEM1405	RPEM207
0/100 (0-6.9 Bar)		RPEM1420	RPEM1406	RPEM1407	RPEM208
0/160 (0-11 Bar)		RPEM1421	RPEM1408	RPEM1409	RPEM197

# RP900 SERIES

Center Back Mount  
Gauge, Stainless Steel, Severe Service & Corrosive Applications  
2" & 2-1/2" Dials

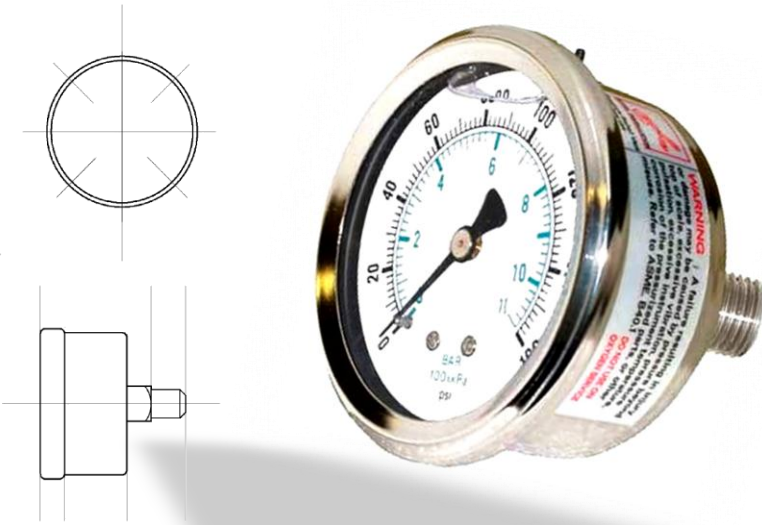
**OILFIELD GAUGE DIVISION**  
Severe Service Gauges

For sales, distributor or corporate information, please contact us.  
Post Office Box 5956  
Shreveport, La. 71135, USA  
P. (800) 523-4055  
P. (318) 747-0444  
F. (318) 747-0645  
[sales@regulatorparts.com](mailto:sales@regulatorparts.com)



OILFIELD GAUGE  
DIVISION

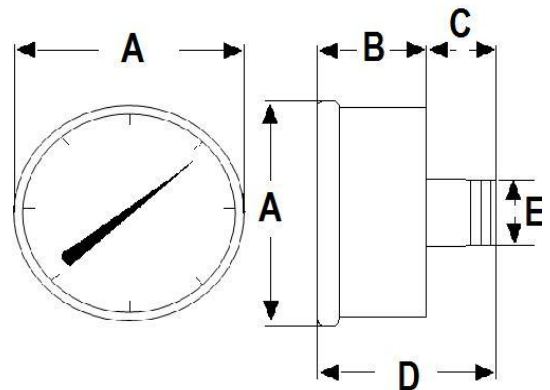
The O.G.D. RP900 series gauges are a high quality, durable line of gauges built to last. By limiting production to only those pressure ranges most requested, we are one of the few companies to offer a premium gauge at economical prices. Originally designed as a specific-use product to fill a void in the Oil & Gas production, compression & transmission markets as a multi-media, varied environment, durable instrument air or "air-set" regulator gauge, the RP900 series has since become the standard for many in a wide variety of hydraulic and pneumatic applications throughout the industrial and commercial markets. The specially designed heavy-walled 304 Stainless Steel case houses a 316 Stainless Steel Bourdon Tube movement and process connection, all further protected by a deep-set (0.27") Stainless Steel Bezel ring. The RP900 series adds to an already wide spectrum of applications by also offering a glycerin filled version for high vibration service and for extended gauge life.



Dimensional Data						
DIAL SIZE		A	B	C	D	E
2.00" (50mm)	In	2.23"	1.09"	0.71"	1.99"	0.25" (M)NPT
	mm	57.00	28.00	23.00	51.00	
2.50" (63mm)	In	2.80"	1.28"	1.18"	2.46"	0.25" (M)NPT
	mm	71.00	33.00	30.00	63.00	

### SPECIFICATIONS:

- Dial Sizes: 2" or 2½"
- Connection: ¼" (M)NPT
- 304SST Case and Bezel
- 316SST Socket & Connection
- 316SST Bourdon Tube
- Dry or Liquid filled
- Accuracy: 2" Face 2%, 2½" Face 1.6%
- Dual Scale: PSI & BAR (x100=kPa)
- Overpressure Protection: 25% of scale
- Top Mount Safety Blow-out plug
- Temperature: 30°F to 160°F Filled, -30°F to 160°F Dry



Model Number & Ordering Information				
Range (in PSI)	2" Face (Dial)		2-1/2" Face (Dial)	
	Dry	Glycerin Filled	Dry	Glycerin Filled
0/30 (0-2 Bar)	RP920C	RP920C-G	N/A	N/A
0/60 (0-4 Bar)	RP920D	RP920D-G	RP923D	RP920D-G
0/100 (0-6.9 Bar)	N/A	N/A	RP924E	RP920E-G
0/160 (0-11 Bar)	RP920F	RP920F-G	RP925F	RP920F-G