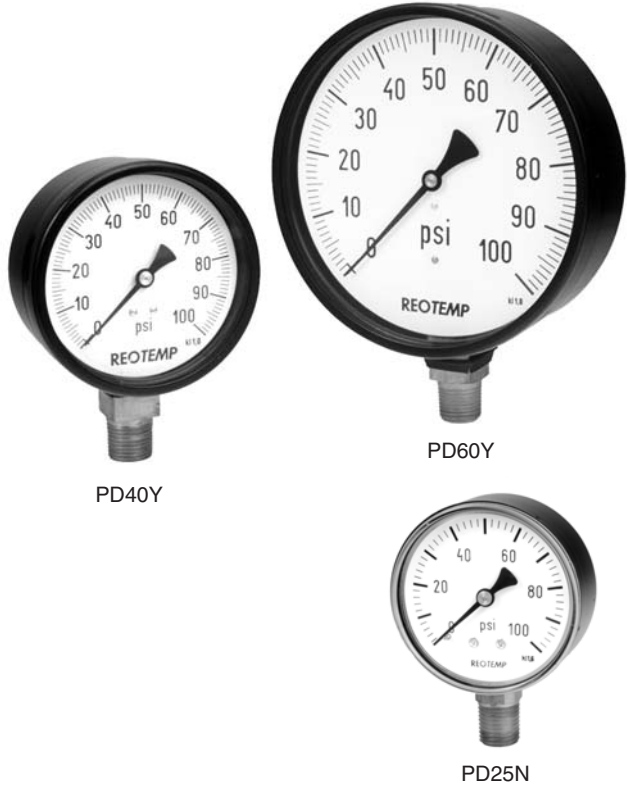


# SERIES PD

## GENERAL PURPOSE GAUGES (DRY)



- Black Steel or Stainless Cases
- Copper Alloy Wetted Parts
- Cost Effective Design
- Standard 3-2-3% Accuracy

### Specifications

- Case:** Black Painted Steel or Stainless Steel
- Ring:** Snap-In Window, Push-On Bezel, or Bayonet
- Lens:** Snap-In Plastic or Glass
- Dial:** Aluminum, Black Figures on White Background
- Wetted Parts:** Copper Alloy
- Temperature:** -10° to 140°F
- Accuracy:** 3-2-3% (1.6% Available)

### Applications

The PD Series offers a wide variety of economical gauges for applications where ambient or process corrosion are not of concern. Suitable for non-vibrating applications. More economical movements are available where 1.6% accuracy is not required.

## HOW TO ORDER

PD — **40** — **Y** — **2** — **C** — **2** — **P23**

Dial:	Case:	Tube & Socket:	Mounting:	Connection:	Range Code:
<b>15</b> = 1.5" <b>20</b> = 2" <b>25</b> = 2.5" <b>30</b> = 3" <b>40</b> = 4" <b>60</b> = 6"	<b>N</b> = Black Steel Snap-In Plastic Lens (1.5", 2", 2.5" Dial) <b>X</b> = St. Steel Snap-In Plastic Lens (1.5", 2", 2.5" Dial) <b>B</b> = Blk Steel Push-On Bezel with glass window (1.5", 2", 2.5", 3", 4" Dial) <b>Z</b> = St. Steel Push-On Bezel with glass window (1.5", 2", 2.5" Dial) <b>Y</b> = Blk Steel Bayonet Removable Glass Lens (4", 6" Dial) <b>S</b> = St. Steel Bayonet Removable Glass Lens (4", 6" Dial)	<b>2</b> = Copper Alloy	<b>A</b> = Bottom <b>B</b> = Bottom/Rear Flange (2.5", 3", 4", 6") <b>C</b> = Back (1.5", 2", 2.5") (4", 6") <b>D</b> = Back /"U" or "O" Clamp (not avail. on "y" case) <b>E</b> = Back/Front Flange (2.5") (4", 6")	<b>8</b> = 1/8" NPT (1.5", 2", 2.5") <b>4</b> = 1/4" NPT (All Sizes) <b>2</b> = 1/2" NPT (4", 6")	<b>See Page 14 for Range Codes</b> <b>Available Ranges:</b> All ranges from vacuum to 6,000 p.s.i. (1.5", max = 600 p.s.i.) (2", max = 3,000 p.s.i.)
				<b>Options:</b> <ul style="list-style-type: none"> <li>• Custom / Logo Dials</li> <li>• Restrictor Screw</li> <li>• High Temperatures (up to 380°F)</li> </ul>	