



Series LS Control Stations

For All Electric Actuators



Features

- Corrosion-resistant enclosure
- Remote and/or local actuator control
- Mounts to actuator, wall or panel
- Easily installed in the field
- Valve position indication lights
- Rugged, heavy-duty construction
- Eliminates need for switch fabrication

Options

- Keyed selector switches for added security

Easy, No-Hassle Actuator Control

All electric actuators need some type of switching device to control them. But why go to the trouble and expense of fabricating control stations on site? Hayward LS Control Stations can be ordered factory-mounted directly to a Hayward actuator – making a neat, compact valve/actuator package. Or, if preferred, they can be mounted off the actuator to a nearby or remote wall or control panel. A color-coded wiring harness makes this kind of field installation easy. LS Control Stations also provide highly visible valve position indication. Models are available that will allow both local and remote actuator control for maximum application flexibility.

Easy to Use

Manual selector switches on the Control Stations control the position of the actuator, open, stop or close. Colored indicator lights show the position of the valve and are a standard feature on all LS Control Stations. A green light indicates an open valve, red a closed one.

Single or Dual Station Control

A single LS Control Station can be used for local control of the actuator. Adding a second station permits actuator control from a remote location as well. A selector on each station switches control from one station to the other on demand – or both stations can be deactivated simultaneously. The highly visible indicator lights clearly show each station's status.

Adapts to all Applications

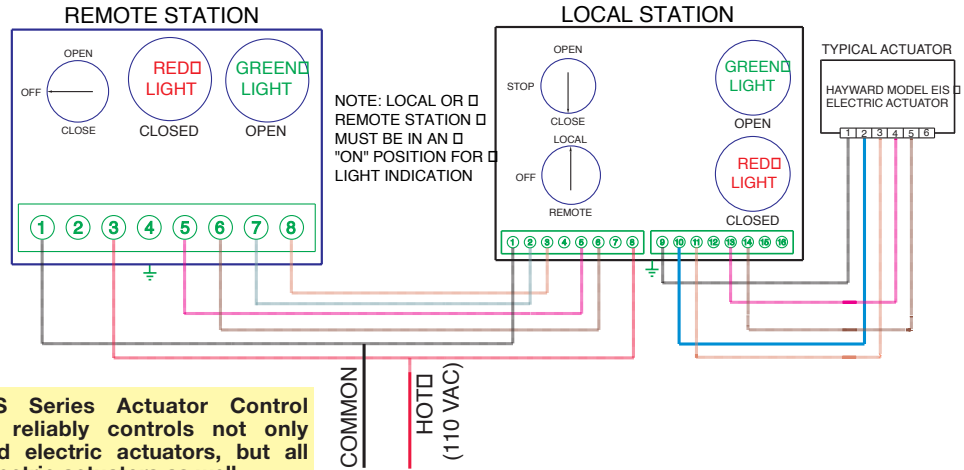
Because of their modular design the LS Control Stations can be easily modified to meet the requirements of almost any automated valve operation. Switching, indication and number of stations can be designed to suit each specific application.

Technical Information

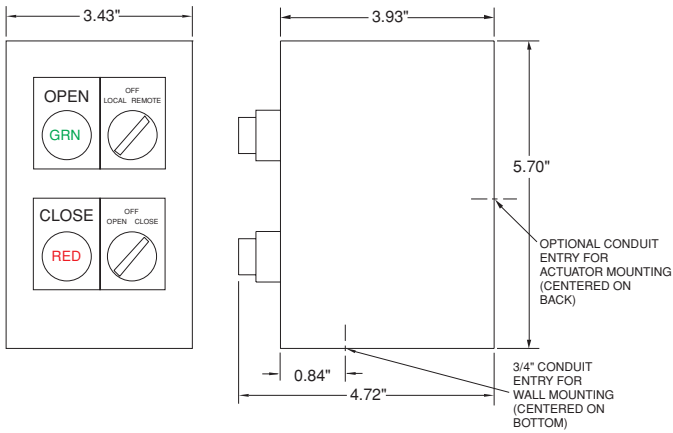
Reliable Control Exactly Where You Need It

You can use one Series LS for either local or remote control of a single valve—or you can link two Series LS Stations together for both local and remote control of a single valve. Refer to the following typical wiring diagrams.

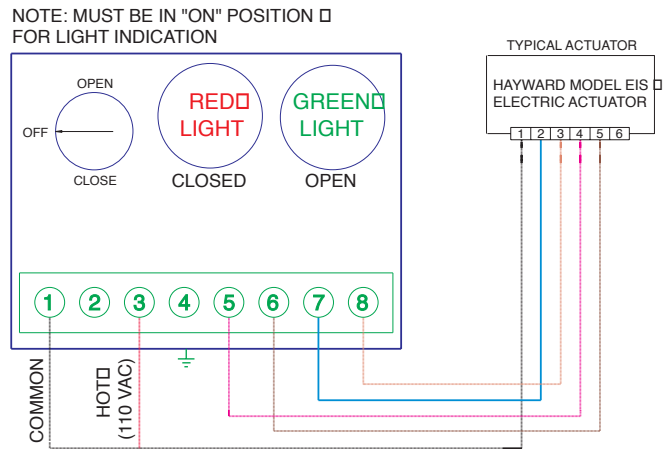
Wiring Diagram Where Two Actuator Control Stations Are Used For Both Remote And Local Control



Dimensions



Wiring Diagram Where Actuator Control Station Is Used For Either Remote Or Local Control



A Better Way to Control Automated Valves

Why bother to custom-fabricate switching controls for your electric actuator? Hayward has a better solution... the Series LS Actuator Control Station. Just connect a power source and you're ready to put your automated valve into service...without loose wires, hanging switches or confusion about whether the actuator has opened or closed the valve.

And the LS Control Station can be mounted directly to the actuator, near it or in a convenient remote location. Not just for new installations, the Actuator Control Station can easily replace existing "make do" control wiring. The color-coded wiring harness makes a field retrofit simple to do.



Hayward Industrial Products, Inc.

One Hayward Industrial Drive, Clemmons, NC 27012
 Tel: 1-888-429-4635 (1-888-HAYINDL) • Fax: 888 778-8410
 E-mail: hflow@haywardnet.com
 Web Site: <http://www.haywardindustrial.com>