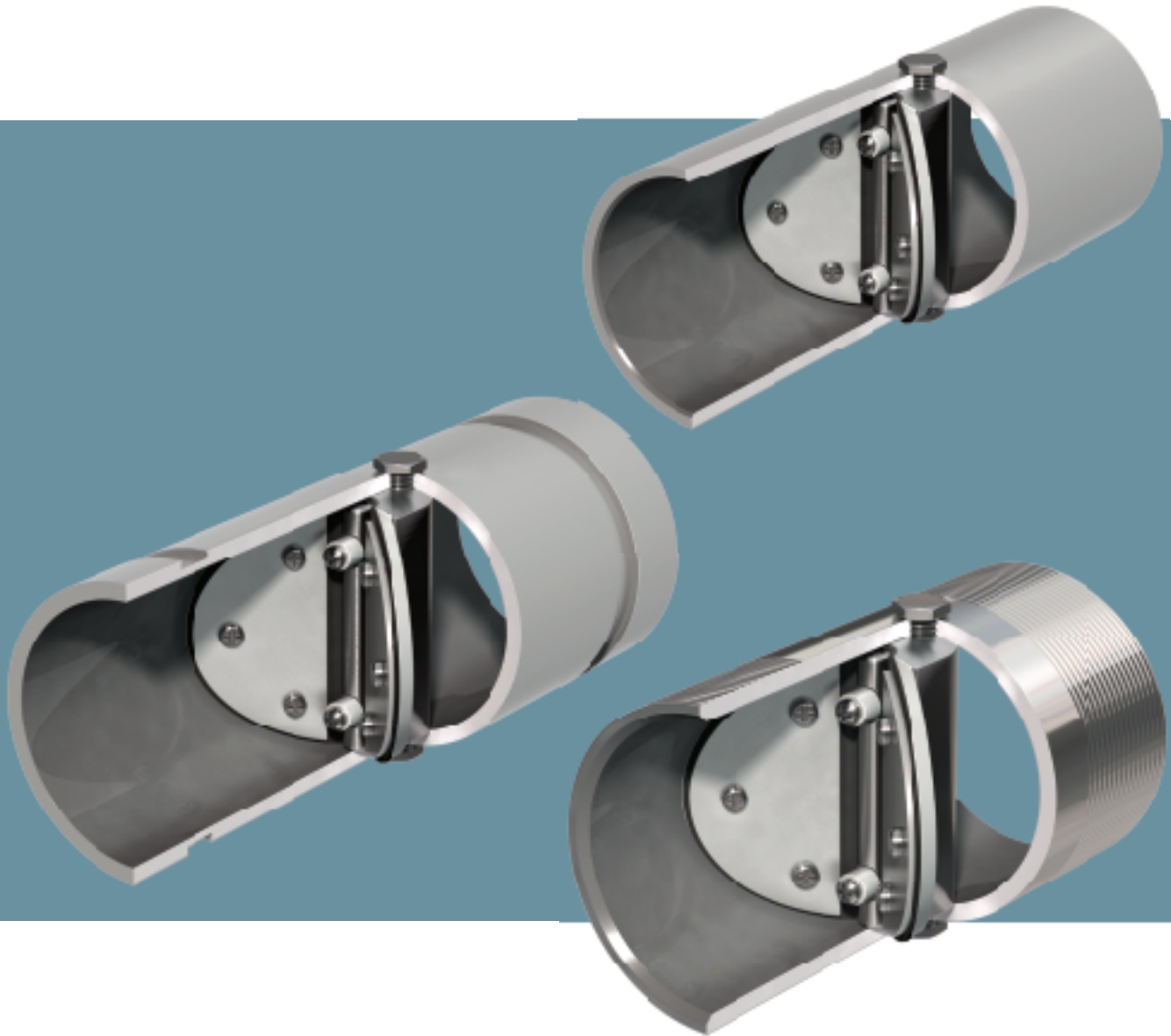


TECHNO™ Male Threaded, Grooved and Plain End Check Valves



TECHNO™

TECHNO MALE THREADED, GROOVED AND PLAIN END CHECK VALVES



DESIGN FEATURES

- **Unrestricted Full Port Seatless Design** provides maximum flow area and a minimum pressure drop
- **Elimination of Metal-to-Metal Rotating Parts.** The stationary hinge post and hinge clamp design eliminates wear of hinges, pins, valve seats, springs and the need for routine maintenance.
- **Can be Mounted in Any Position** for the most efficient piping layout. In most installations springs are not required. Consult the factory or your local representative for vertical lines with downward flow.
- **Non Slam Quick Closure Feature.** The valve plate design offers minimum travel from full open to full closed position and complete metal to metal valve plate structural support.
- **Unique Flexible Elastomer Seal.** Continuous elastomer seal provides final closure around complete valve bore with the strength and durability to insure prolonged cycle life, outwearing traditional metal seated valves.

TECHNOLOGICALLY ADVANCED INTERNAL DESIGN

Engineered elastomers, developed for durability beyond the range of ordinary rubbers, provide the hinge and the seal in the unique patented TECHNO design. These tough, flexible, reinforced elastomers are resistant to liquids, gases, steam, chemicals, oil and fuel. The strength and durability of these elastomers ensure prolonged cycle life, outlasting traditional metal hinged valves. TECHNO's unique resilient seal provides tight shut-off.

Inherent features include:

- Large free area with resulting low pressure loss
- High sealing integrity from the continuous seal design
- Reduced noise and wear by elimination of Metal-to-Metal rotating parts
- Stable operation under a wide range of flow rates

COST EFFICIENT - RELIABLE - SEATLESS CHECK VALVES

TECHNO has been a leading supplier of high quality check valves to all phases of industry for many years. Thousands of TECHNO products are presently in service demonstrating an outstanding performance record.

The Technocheck valve design enables flexibility in body configuration. In addition to providing Male Threaded Ends, Plain Ends, and Grooved Ends, TECHNO can supply any combination of end configurations to satisfy your specific requirements. Special End-to-End dimensions can also be provided upon request.

TECHNO MALE THREADED, GROOVED AND PLAIN END CHECK VALVES



MALE THREADED ENDS

Style	Body	Internals	Cold Working Pressure (psig)
5002-AL	Aluminum	Aluminum	50
5002-BR	Brass	Brass	150
5002-316	316 Stainless Steel	316 Stainless Steel	150
5002 Class A	Steel	Aluminum	150
5002 Class D	Steel	Plated Steel	150
Available in Sizes 1 inch to 12 inch Diameter			



GROOVED ENDS

Style	Body	Internals	Cold Working Pressure (psig)
5103-AL-V	Aluminum	Aluminum	50
5103-V	Steel	Aluminum	150
5103-316-V	316 Stainless Steel	316 Stainless Steel	150
Available in Sizes 1 inch to 12 inch Diameter			



PLAIN ENDS

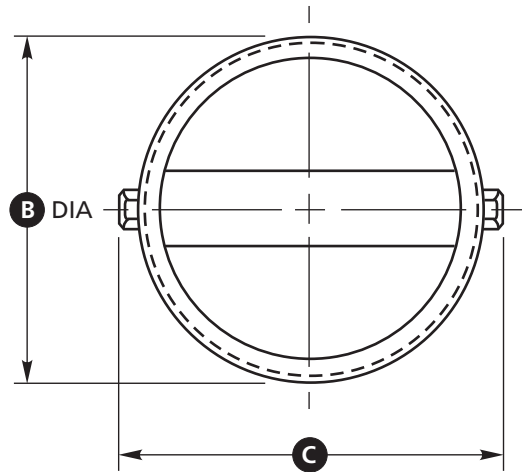
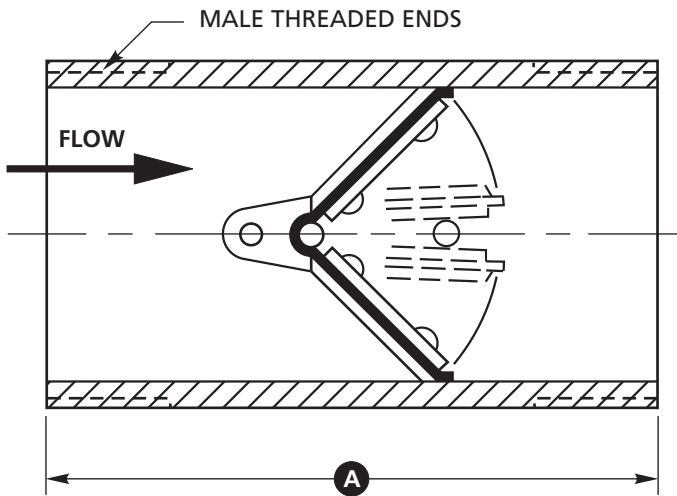
Style	Body	Internals	Cold Working Pressure (psig)
5104-AL-P	Aluminum	Aluminum	50
5104-P	Steel	Aluminum	150
5104-316-P	316 Stainless Steel	316 Stainless Steel	150
Available in Sizes 1 inch to 12 inch Diameter			

The above style valves are furnished with Buna-N as Standard.
Combination End Configurations also Available.
Consult Factory for Materials, Sizes and Pressure Ratings Not Shown.

CERTIFICATIONS



TECHNOCHECK STYLE 5002 MALE THREADED ENDS



GENERAL DIMENSIONS FOR STYLE 5002

Valve Size inches	A	B	C
1	3 1/2	1.315	1 5/8
1 1/4	3 1/2	1.660	2
1 1/2	4	1.900	2 1/4
2	4	2 3/8	2 3/4
2 1/2	5	2 7/8	3 1/4
3	5 1/2	3 1/2	3 7/8
4	6	4 1/2	4 7/8
5	7	5 9/16	6 1/8
6	8	6 5/8	7 1/8
8	10	8 5/8	9 1/2
10	12	10 3/4	11 1/2
12	14	12 3/4	13 3/4

All Dimensions in inches.

STANDARD MODELS & MATERIALS

Style	Body	Internals	Cold Working Pressure (psig)
5002-AL	Aluminum	Aluminum	50
5002-BR	Brass	Brass	150
5002-316	316 Stainless Steel	316 Stainless Steel	150
5002 Class A	Steel	Aluminum	150
5002 Class D	Steel	Plated Steel	150
Standard Elastomer: Buna-N			

Combination End Configurations also Available. Consult Factory for Materials, Sizes and Pressure Ratings not shown.

OPTIONAL MATERIAL SELECTION

Internal Materials

- Aluminum
- Brass
- 316 Stainless Steel
- Plated Steel

SEALING MEMBER MATERIALS

Material Temperature Range*

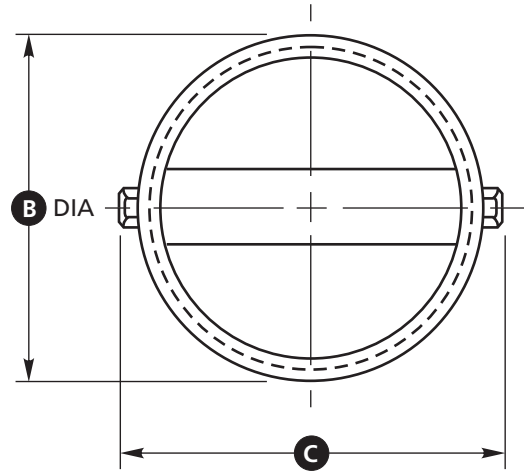
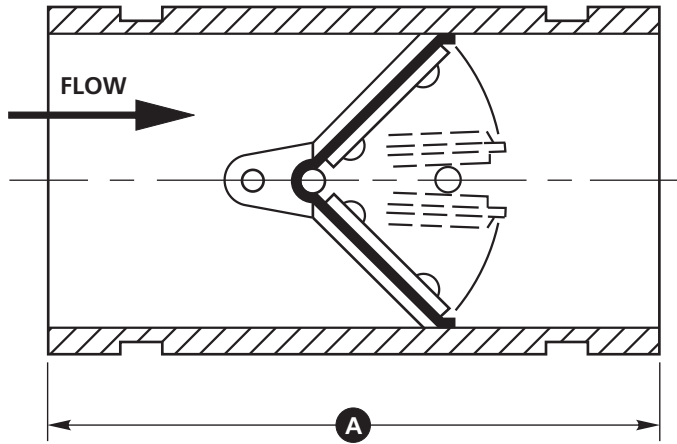
- Buna-N -60°F to 225°F
- Neoprene -40°F to 225°F
- EPDM -40°F to 300°F
- Viton -20°F to 400°F
- Silicone -100°F to 500°F

* This temperature range is for general guidance. The figures may vary with application.

SPRING MATERIAL

- 302 Stainless Steel

TECHNOCHECK STYLE 5103 GROOVED ENDS



GENERAL DIMENSIONS FOR STYLE 5103

Valve Size inches	A	B	C
1	5 3/4	1.315	1 5/8
1 1/4	5 3/4	1.660	2
1 1/2	5 3/4	1.900	2 1/4
2	5 3/4	2 3/8	2 3/4
2 1/2	5 3/4	2 7/8	3 1/4
3	5 3/4	3 1/2	3 7/8
4	6 3/4	4 1/2	4 7/8
5	7 3/4	5 9/16	6 1/8
6	8 3/4	6 5/8	7 1/8
8	10 3/4	8 5/8	9 1/2
10	12 3/4	10 3/4	11 1/2
12	14 3/4	12 3/4	13 3/4
14	16 3/4	14	15
16	18 3/4	16	17
18	20 3/4	18	19
20	22 3/4	20	21 1/4

All Dimensions in inches.

STANDARD MODELS & MATERIALS

Style	Body	Internals	Cold Working Pressure (psig)
5103-AL-V	Aluminum	Aluminum	50
5103-V	Steel	Aluminum	150
5103-316-V	316 Stainless Steel	316 Stainless Steel	150
Standard Elastomer: Buna-N			

Combination End Configurations also Available. Consult Factory for Materials, Sizes and Pressure Ratings not shown.

OPTIONAL MATERIAL SELECTION

Internal Materials

- Aluminum
- Brass
- 316 Stainless Steel
- Plated Steel

SEALING MEMBER MATERIALS

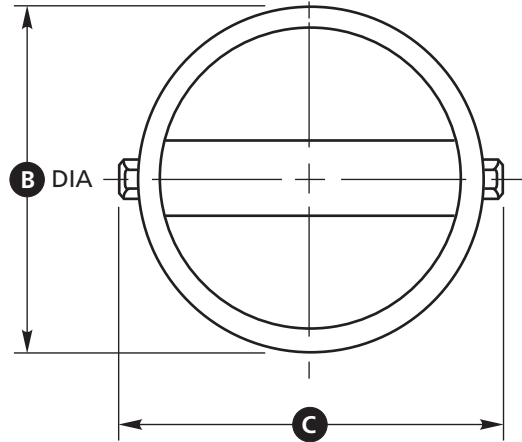
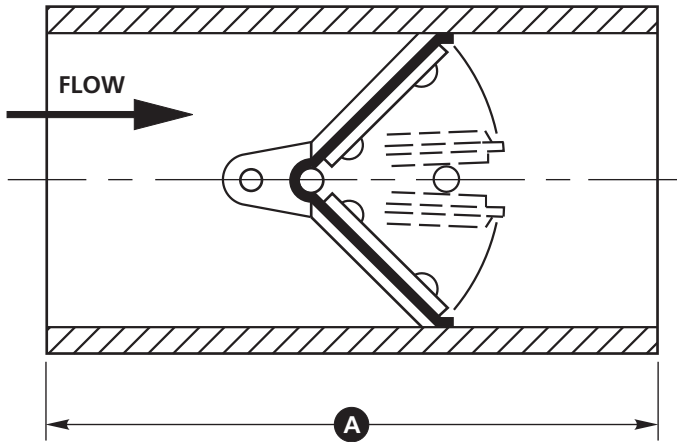
Material	Temperature Range*
• Buna-N	-60°F to 225°F
• Neoprene	-40°F to 225°F
• EPDM	-40°F to 300°F
• Viton	-20°F to 400°F
• Silicone	-100°F to 500°F

* This temperature range is for general guidance. The figures may vary with application.

SPRING MATERIAL

- 302 Stainless Steel

TECHNOCHECK STYLE 5104 PLAIN ENDS



GENERAL DIMENSIONS FOR STYLE 5104

Valve Size inches	A	B	C
1	5 3/4	1.315	1 5/8
1 1/4	5 3/4	1.660	2
1 1/2	5 3/4	1.900	2 1/4
2	5 3/4	2 3/8	2 3/4
2 1/2	5 3/4	2 7/8	3 1/4
3	5 3/4	3 1/2	3 7/8
4	6 3/4	4 1/2	4 7/8
5	7 3/4	5 9/16	6 1/8
6	8 3/4	6 5/8	7 1/8
8	10 3/4	8 5/8	9 1/2
10	12 3/4	10 3/4	11 1/2
12	14 3/4	12 3/4	13 3/4
14	16 3/4	14	15
16	18 3/4	16	17
18	20 3/4	18	19
20	22 3/4	20	21 1/4

All Dimensions in inches.

STANDARD MODELS & MATERIALS

Style	Body	Internals	Cold Working Pressure (psig)
5104-AL-P	Aluminum	Aluminum	50
5104-P	Steel	Aluminum	150
5104-316-P	316 Stainless Steel	316 Stainless Steel	150
Standard Elastomer: Buna-N			

Combination End Configurations also Available. Consult Factory for Materials, Sizes and Pressure Ratings not shown.

OPTIONAL MATERIAL SELECTION

Internal Materials

- Aluminum
- Brass
- 316 Stainless Steel
- Plated Steel

SEALING MEMBER MATERIALS

Material	Temperature Range*
• Buna-N	-60°F to 225°F
• Neoprene	-40°F to 225°F
• EPDM	-40°F to 300°F
• Viton	-20°F to 400°F
• Silicone	-100°F to 500°F

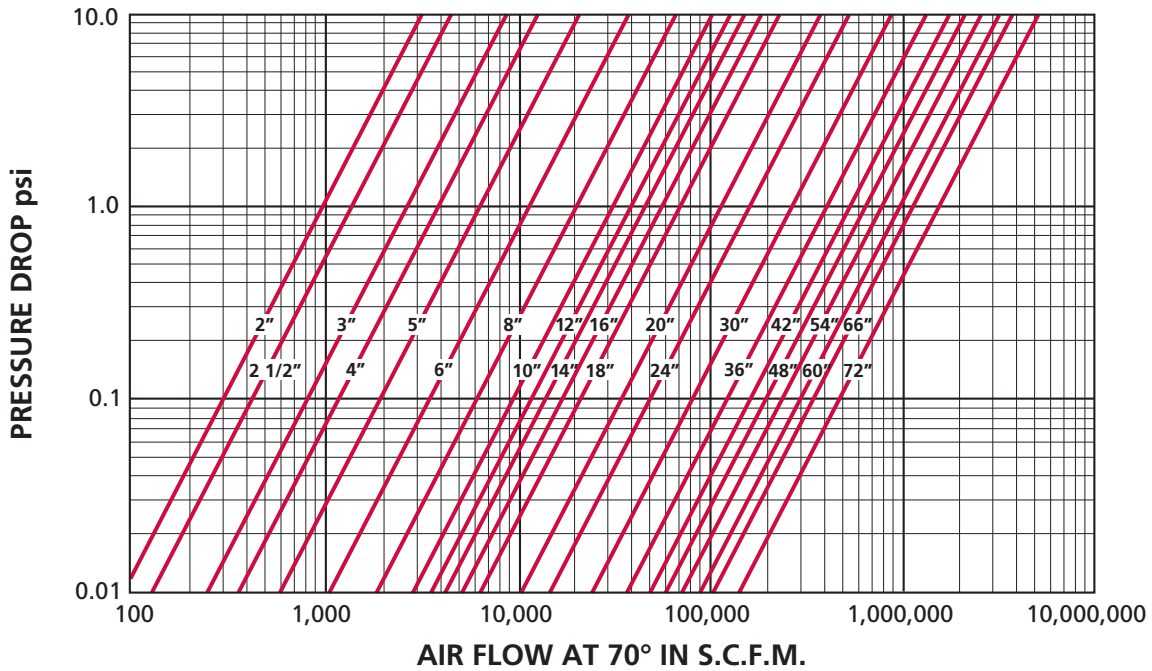
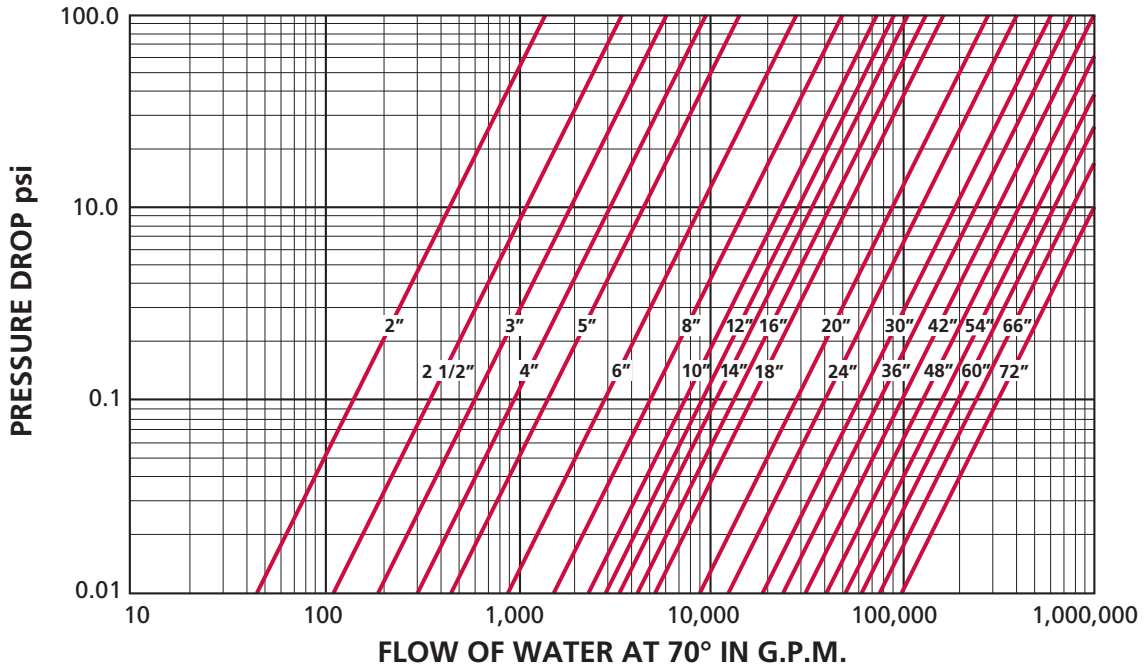
* This temperature range is for general guidance. The figures may vary with application.

SPRING MATERIAL

- 302 Stainless Steel

TECHNO MALE THREADED, GROOVED AND PLAIN END CHECK VALVES

PRESSURE DROP CHARTS FOR WATER AND AIR SERVICE



TRADEMARK INFORMATION

TECHNO™ is a registered trademark which is owned by Cameron.

This document contains references to registered trademarks or product designations, which are not owned by Cameron.

Trademark	Owner
NEOPRENE	E.I. DuPont De Nemours & Company
VITON	E.I. DuPont De Nemours & Company

**VALVES & MEASUREMENT**

3250 Briarpark Drive, Suite 300
Houston, Texas 77042
USA Toll Free 800 323 9160

For the most current contact and location information go to: www.c-a-m.com/valvesandmeasurement