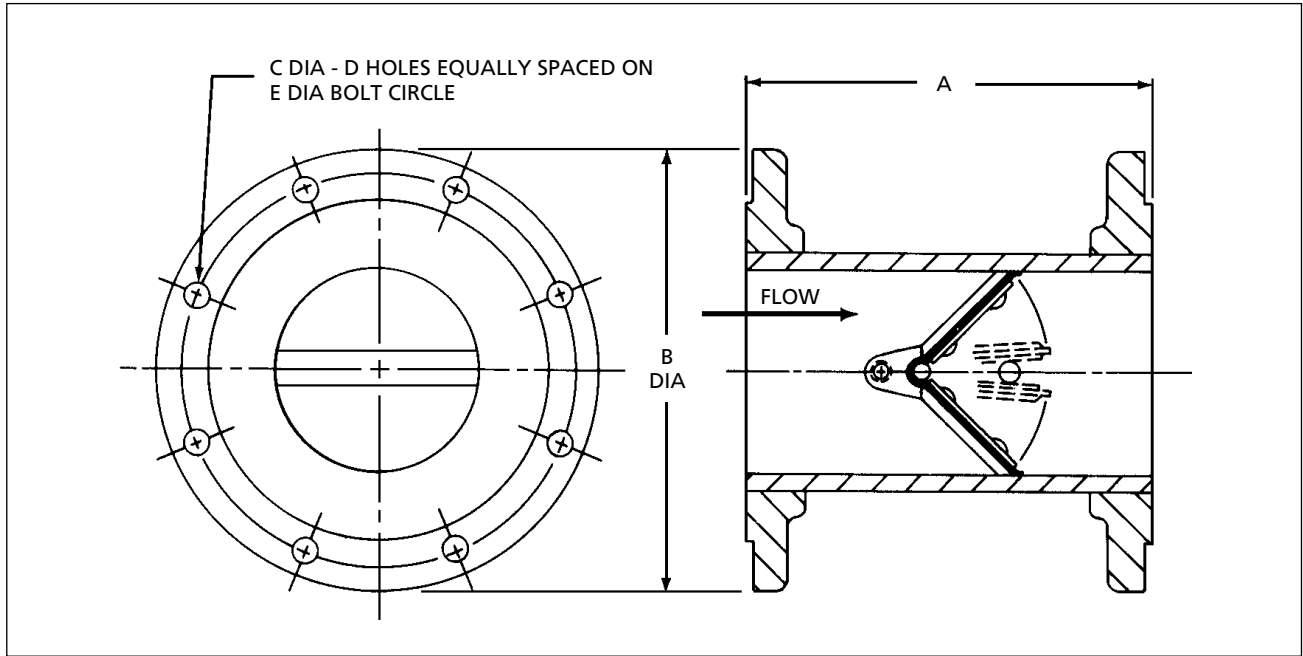


TECHNOCHECK STYLE 5107 300# FLANGED



GENERAL DIMENSIONS FOR STYLE 5107

Valve Size inches	A	B	C	D	E
1	4 1/2	4 7/8	3/4	4	3 1/2
1 1/4	4 1/2	5 1/4	3/4	4	3 7/8
1 1/2	5 1/8	6 1/8	7/8	4	4 1/2
2	5 1/8	6 1/2	3/4	8	5
2 1/2	5 5/8	7 1/2	7/8	8	5 7/8
3	6	8 1/4	7/8	8	6 5/8
4	6 5/8	10	7/8	8	7 7/8
5	7 1/4	11	7/8	8	9 1/4
6	8	12 1/2	7/8	12	10 5/8
8	10 1/2	15	1	12	13
10	12 1/2	17 1/2	1 1/8	16	15 1/4
12	14 1/2	20 1/2	1 1/4	16	17 3/4
14	16 1/2	23	1 1/4	20	20 1/4
16	18 1/2	25 1/2	1 3/8	20	22 1/2
18	20 3/4	28	1 3/8	24	24 3/4
20	24	30 1/2	1 3/8	24	27
24	27	36	1 5/8	24	32
30	35	43	1 7/8	28	39 1/4
36	41	50	2 1/8	32	46
42	47	57	2 1/8	36	52 3/4

All Dimensions in inches.

STANDARD MODELS & MATERIALS

Style	Body	Internals	C.W.P. (psi)
5107	Steel	Plated Steel	300
5107-316	316 Stainless Steel	316 Stainless Steel	300
Standard Elastomer: BUNA-N			

OPTIONAL MATERIAL SELECTION

Internal Materials

- Aluminum
- Bronze
- 316 Stainless Steel
- Plated Steel

Sealing Member Materials

MATERIAL	TEMPERATURE RANGE*
• Buna-N	-60°F to 225°F
• Neoprene	-40°F to 225°F
• Hypalon	-20°F to 300°F
• EPDM	-40°F to 300°F
• Viton	-20°F to 400°F
• Reinforced Teflon**	-20°F to 450°F
• Silicone	-100°F to 500°F
• FDA Approved White Neoprene	-40°F to 225°F

* This temperature range is for general guidance. The figures may vary with application.

** Armalon with reinforced Teflon layers. On valves 2.5" and smaller, the Armalon layer is omitted and two layers of reinforced Teflon fabric remain.

Spring Material

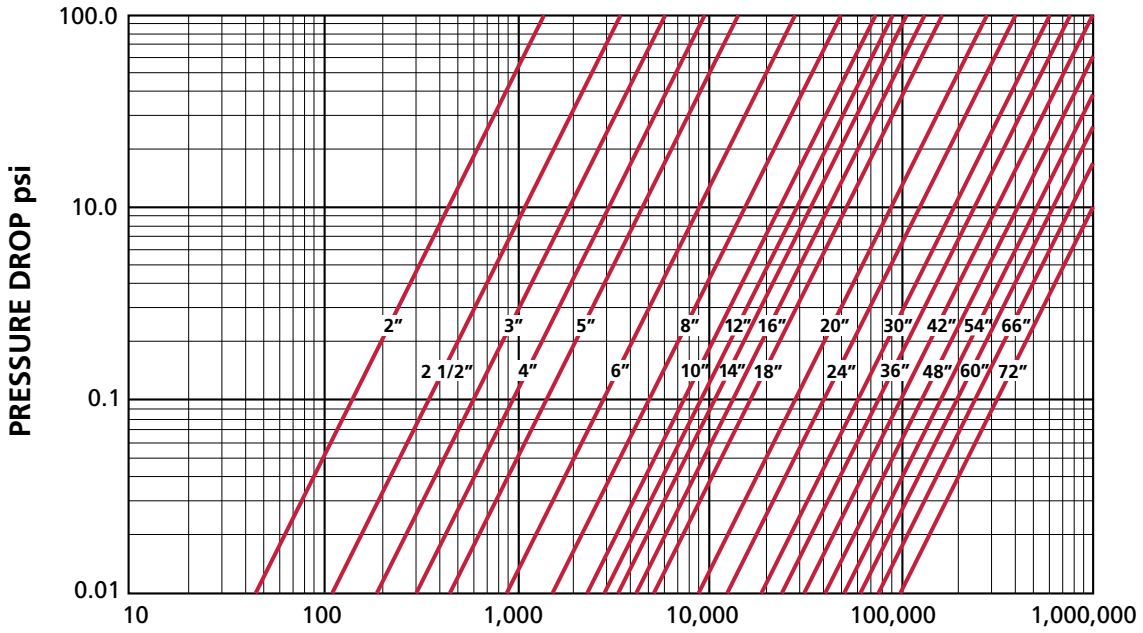
- 302 Stainless Steel

CONSULT FACTORY FOR MATERIALS, SIZES
AND PRESSURE RATINGS NOT SHOWN.

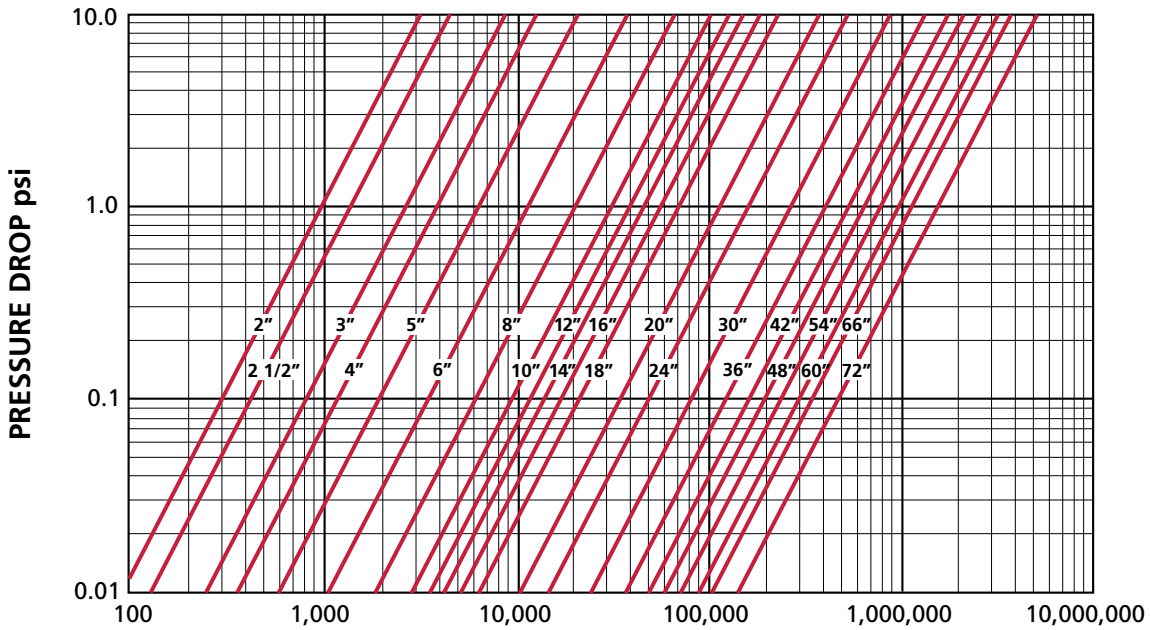
ISO 9001 CERTIFIED

TECHNO

PRESSURE DROP CHARTS FOR WATER AND AIR SERVICE



FLOW OF WATER AT 70° IN G.P.M.



AIR FLOW AT 70° IN S.C.F.M.



TBV Techno
 1537 Grafton Road
 Millbury, MA 01527
 Phone: 508 887 9400
 Fax: 508 839 6624
www.ccvvalve.com