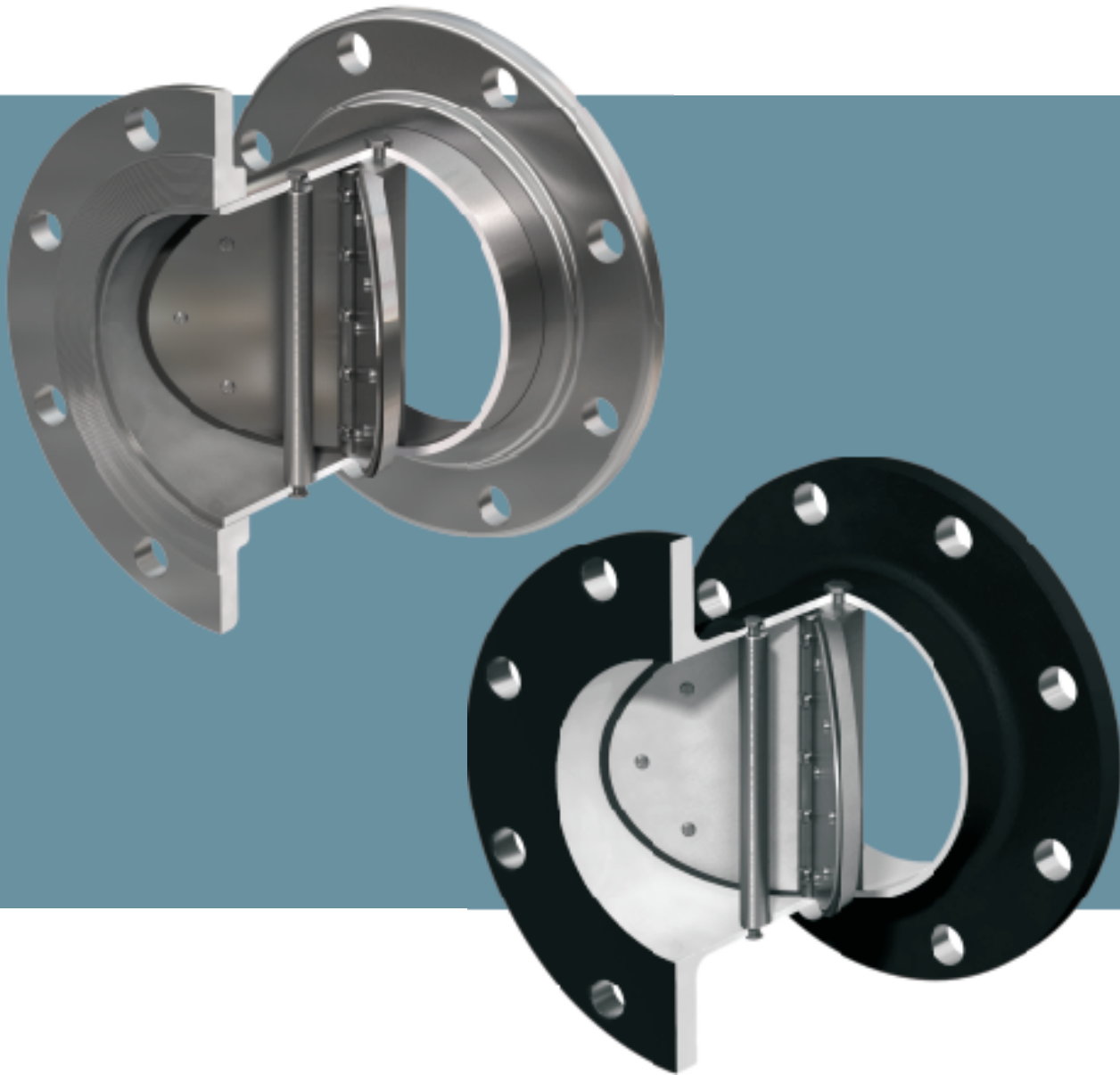
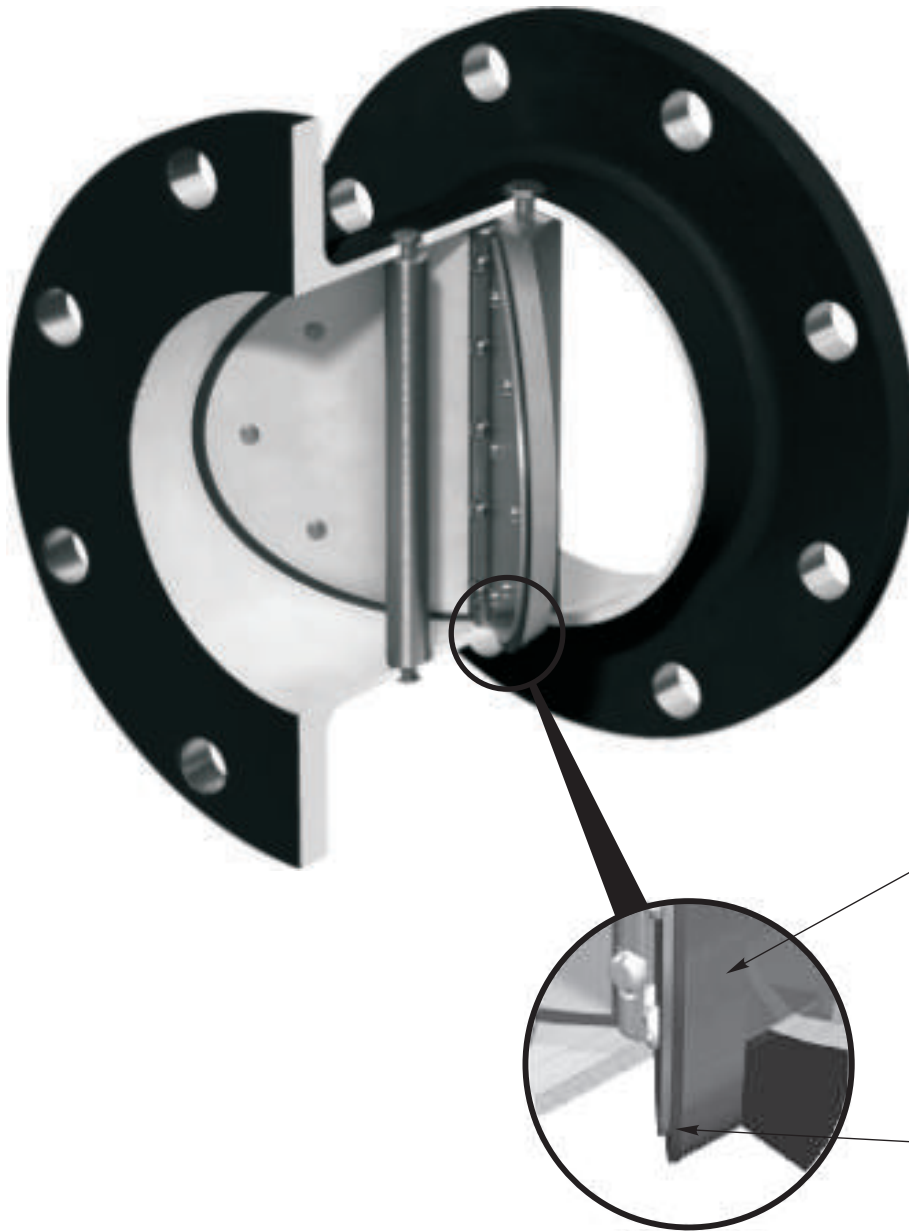


# TECHNO™ Full Flanged Check Valves



**TECHNO™**

## TECHNO FULL FLANGED CHECK VALVES DESIGN FEATURES

**Can Be Mounted In Any Position**

For the most efficient piping layout

**Unrestricted Full Port Seatless Design**

Provides free flow through design with virtually no pressure loss

**Elimination Of Metal-to-Metal Rotating Parts**

The stationary hinge post and hinge clamp design eliminates wear of hinges, pins, valve seats, springs and the need for routine maintenance

**Non-Slam Quick Closure Feature**

The valve plate design offers minimum travel from full open to full closed position and complete metal-to-metal valve plate structural support.

**Unique Flexible Elastomer Seal**

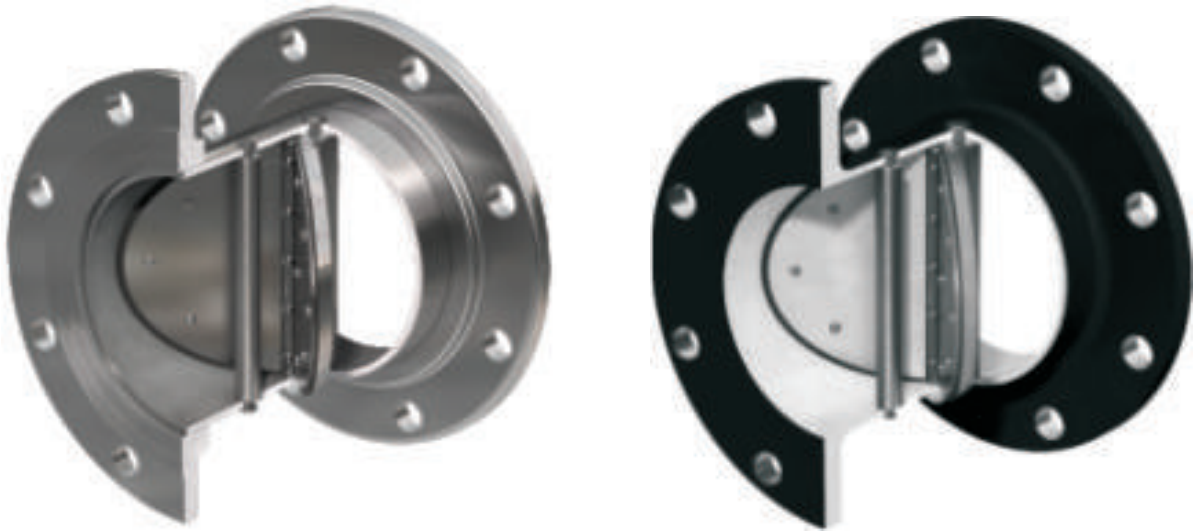
Continuous elastomer seal provides final closure around complete valve bore with the strength and durability to ensure prolonged cycle life, outwearing traditional metal seated valves.

## TECHNO FULL FLANGED CHECK VALVES

TECHNO has been a leading supplier of high quality check valves to all phases of industry for many years. Thousands of TECHNO products are presently in service demonstrating an outstanding performance record.

Exclusive Technocheck design combined with an extensive selection of materials result in exceptionally high performance and reliability for most liquid or gaseous applications.

Our unique design combined with many years of experience allows us to satisfy the most difficult applications. Specials available upon request.



### STANDARD MODELS AND MATERIALS

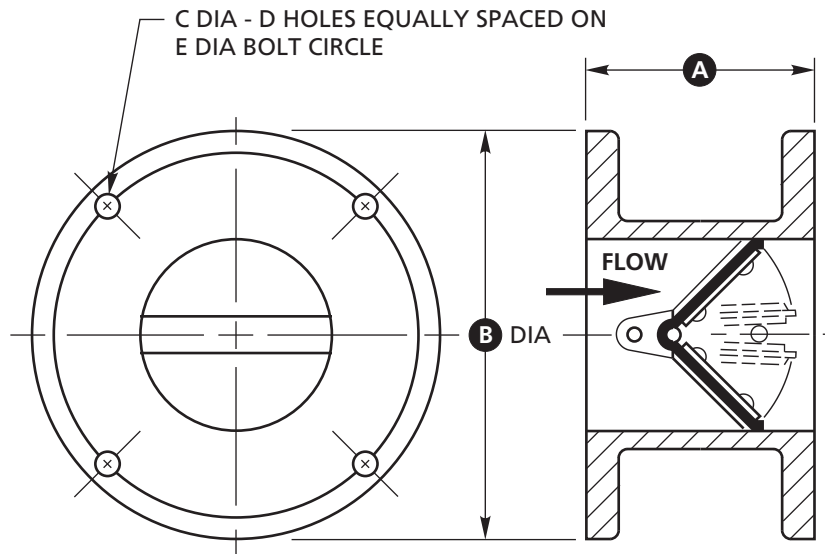
Style	Body	Internals	Flange Series	Cold Working Pressure (psi)
5003	Carbon Steel	Plated Steel	150	150
5003-316	316 Stainless Steel	316 Stainless Steel	150	150
5004 CIL	Cast Iron Lightweight	Aluminum	125	50
5004 CAL	Cast Aluminum Lightweight	Aluminum	125	50
5102	Carbon Steel Lightweight	Aluminum	125	150
5107	Carbon Steel	Plated Steel	300	300

### LONG PATTERN VALVES

(Can be used when direct flanging a butterfly valve downstream)

Style	Body	Internals	Flange Series	Cold Working Pressure (psi)
5081-F	Carbon Steel	Aluminum	125	150
5081-R	Carbon Steel	Aluminum	150	150

Standard Elastomer: Buna-N

**TECHNOCHECK STYLE 5004-CIL & 5004-CAL WITH 125# FLANGED ENDS**

**GENERAL DIMENSIONS FOR STYLE 5004-CIL & -CAL**

Valve Size inches	A	B	C	D	E
2	4 1/2	6	3/4	4	4 3/4
2 1/2	5	7	3/4	4	5 1/2
3	5	7 1/2	3/4	4	6
4	5 1/2	9	3/4	8	7 1/2
5	6	10	7/8	8	8 1/2
6	7	11	7/8	8	9 1/2
8	9	13 1/2	7/8	8	11 3/4
10	11	16	1	12	14 1/4
12	13	19	1	12	17
14	15	21	1 1/8	12	18 3/4

All Dimensions in inches.

For sizes above 14 " see Style 5003 or 5102.

**OPTIONAL MATERIAL SELECTION**
**Internal Materials**

- Aluminum
- Brass
- 316 Stainless Steel
- Plated Steel

**SEALING MEMBER MATERIALS**
**Material Temperature Range\***

- Buna-N -60°F to 225°F
- Neoprene -40°F to 225°F
- EPDM -40°F to 300°F
- Viton -20°F to 400°F
- Silicone -100°F to 500°F

\* This temperature range is for general guidance. The figures may vary with application.

**SPRING MATERIAL**

- 302 Stainless Steel

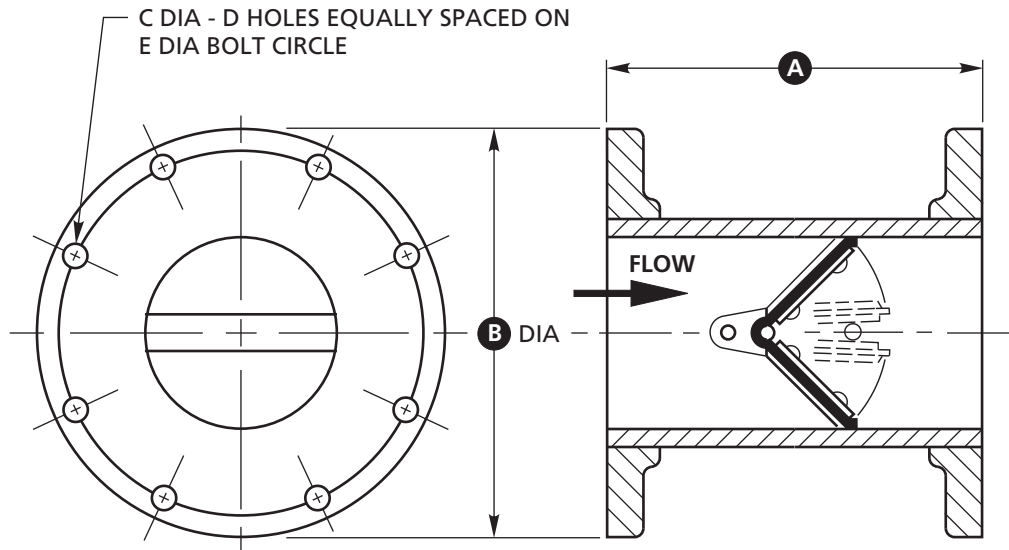
**STANDARD MODELS & MATERIALS**

Style	Body	Internals	Cold Working Pressure (psi)
5004-CIL	Cast Iron Lightweight	Aluminum	50
5004-CAL	Cast Aluminum Lightweight	Aluminum	50

Standard Elastomer: Buna-N

Consult Factory for Materials, Sizes and Pressure Ratings Not Shown.

## TECHNOCHECK STYLE 5102 WITH 125# FLANGED ENDS



### GENERAL DIMENSIONS FOR STYLE 5102

Valve Size inches	A	B	C	D	E
3	5	7 1/2	3/4	4	6
4	5 1/2	9	3/4	8	7 1/2
5	6	10	7/8	8	8 1/2
6	7	11	7/8	8	9 1/2
8	9	13 1/2	7/8	8	11 3/4
10	11	16	1	12	14 1/4
12	13	19	1	12	17
14	15	21	1 1/8	12	18 3/4
16	17	23 1/2	1 1/8	16	21 1/4
18	19	25	1 1/4	16	22 3/4
20	21	27 1/2	1 1/4	20	25
24	25	32	1 3/8	20	29 1/2
30	31	38 3/4	1 3/8	28	36
36	37	46	1 5/8	32	42 3/4

All Dimensions in inches.

### STANDARD MODELS & MATERIALS

Style	Body	Internals	Elastomer	Cold Working Pressure (psi)
5102	Steel Lightweight	Aluminum	Buna-N	150

Consult Factory for Materials, Sizes and Pressure Ratings Not Shown.

### OPTIONAL MATERIAL SELECTION

#### Internal Materials

- Aluminum
- Brass
- 316 Stainless Steel
- Plated Steel

#### SEALING MEMBER MATERIALS

##### Material      Temperature Range\*

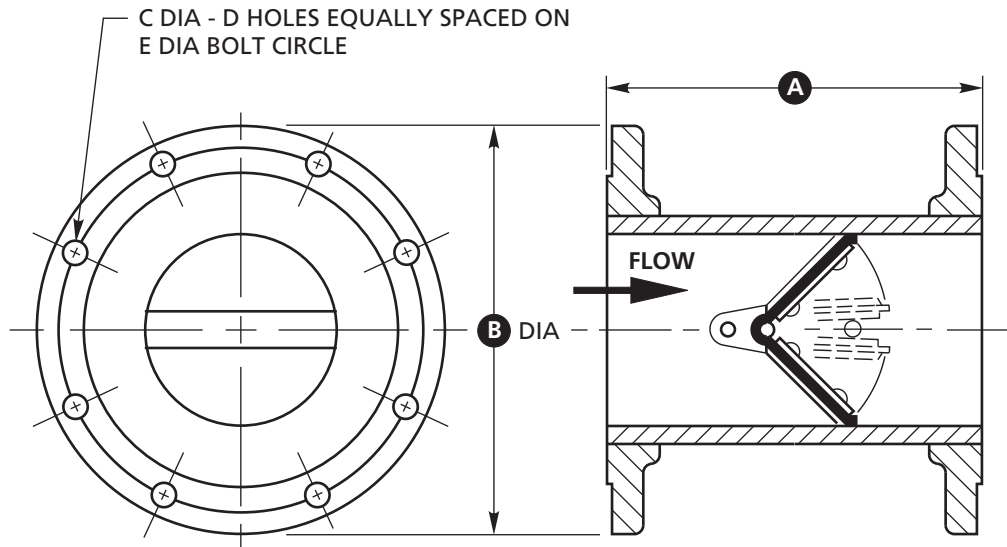
- Buna-N      -60°F to 225°F
- Neoprene    -40°F to 225°F
- EPDM        -40°F to 300°F
- Viton         -20°F to 400°F
- Silicone      -100°F to 500°F

\* This temperature range is for general guidance. The figures may vary with application.

#### SPRING MATERIAL

- 302 Stainless Steel

## TECHNOCHECK STYLE 5003 WITH 150# FLANGED ENDS



### GENERAL DIMENSIONS FOR STYLE 5003

Valve Size inches	A	B	C	D	E
1	3	4 1/4	5/8	4	3 1/8
1 1/4	4 1/2	4 5/8	5/8	4	3 1/2
1 1/2	4 1/2	5	5/8	4	3 7/8
2	4 1/2	6	3/4	4	4 3/4
2 1/2	5	7	3/4	4	5 1/2
3	5	7 1/2	3/4	4	6
4	5 1/2	9	3/4	8	7 1/2
5	6	10	7/8	8	8 1/2
6	7	11	7/8	8	9 1/2
8	9	13 1/2	7/8	8	11 3/4
10	11	16	1	12	14 1/4
12	13	19	1	12	17
14	15	21	1 1/8	12	18 3/4
16	17	23 1/2	1 1/8	16	21 1/4
18	19	25	1 1/4	16	22 3/4
20	21	27 1/2	1 1/4	20	25
24	25	32	1 3/8	20	29 1/2
30	31	38 3/4	1 3/8	28	36
36	37	46	1 5/8	32	42 3/4
42	43	53	1 5/8	36	49 1/2
48	49	59 1/2	1 5/8	44	56

All Dimensions in inches.

### STANDARD MODELS & MATERIALS

Style	Body	Internals	Cold Working Pressure (psi)
5003	Steel	Plated Steel	150
5003-316	316 Stainless Steel	316 Stainless Steel	150

Standard Elastomer: Buna-N

Consult Factory for Materials, Sizes and Pressure Ratings Not Shown.

### OPTIONAL MATERIAL SELECTION

#### Internal Materials

- Aluminum
- Brass
- 316 Stainless Steel
- Plated Steel

#### SEALING MEMBER MATERIALS

Material	Temperature Range*
• Buna-N	-60°F to 225°F
• Neoprene	-40°F to 225°F
• EPDM	-40°F to 300°F
• Viton	-20°F to 400°F
• Silicone	-100°F to 500°F

\* This temperature range is for general guidance. The figures may vary with application.

#### SPRING MATERIAL

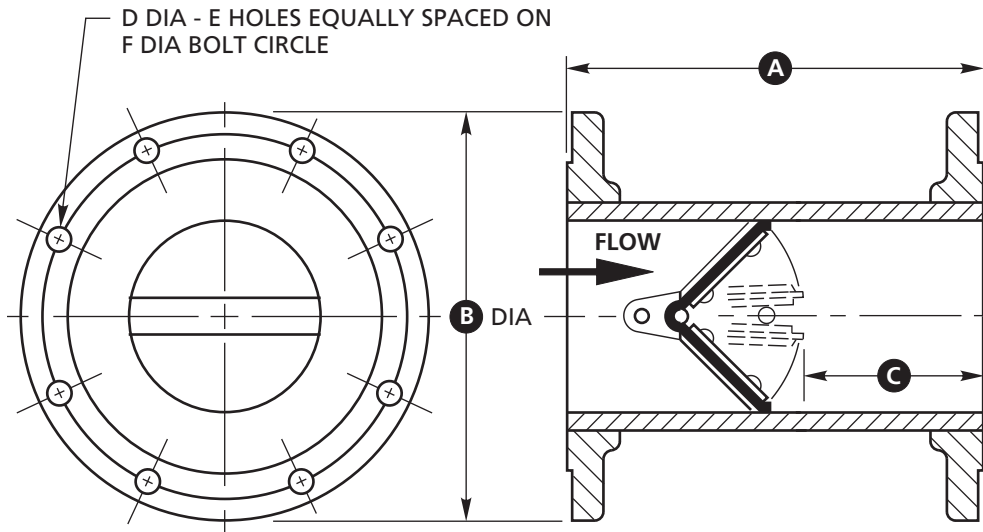
- 302 Stainless Steel

## TECHNOCHECK LONG PATTERN VALVES

(Can be used when direct flanging a butterfly valve downstream)

**STYLE 5081-R RAISED FACE WITH 150# FLANGED ENDS**

**STYLE 5081-F FLAT FACE WITH 125# FLANGED ENDS**



### GENERAL DIMENSIONS FOR STYLES 5081-R & -F

Valve Size inches	A	B	C	D	E	F
2	6	6	2 1/4	3/4	4	4 3/4
2 1/2	6 1/2	7	2 1/4	3/4	4	5 1/2
3	7	7 1/2	2 1/4	3/4	4	6
4	9	9	2 1/2	3/4	8	7 1/2
5	11	10	2 7/8	7/8	8	8 1/2
6	12	11	3 1/8	7/8	8	9 1/2
8	13 1/2	13 1/2	4 1/8	7/8	8	11 3/4
10	16 5/8	16	5 1/8	1	12	14 1/4
12	19 1/2	19	6 1/8	1	12	17
14	21 3/4	21	7 1/8	1 1/8	12	18 3/4
16	25	23 1/2	8 1/8	1 1/8	16	21 1/4
18	28	25	9 1/8	1 1/4	16	22 3/4
20	30	27 1/2	10 1/8	1 1/4	20	25
24	39 5/8	32	12 1/8	1 3/8	20	29 1/2
30	42 1/2	38 3/4	15 1/8	1 3/8	28	36
36	54	46	18 1/8	1 5/8	32	42 3/4

All Dimensions in inches.

### STANDARD MODELS & MATERIALS

Style	Body	Internals	Cold Working Pressure (psi)
5081-R	Steel	Aluminum	150
5081-F	Steel	Aluminum	150

Standard Elastomer: Buna-N

Consult Factory for Materials, Sizes and Pressure Ratings Not Shown.

### OPTIONAL MATERIAL SELECTION

#### Internal Materials

- Aluminum
- Brass
- 316 Stainless Steel
- Plated Steel

#### SEALING MEMBER MATERIALS

Material	Temperature Range*
----------	--------------------

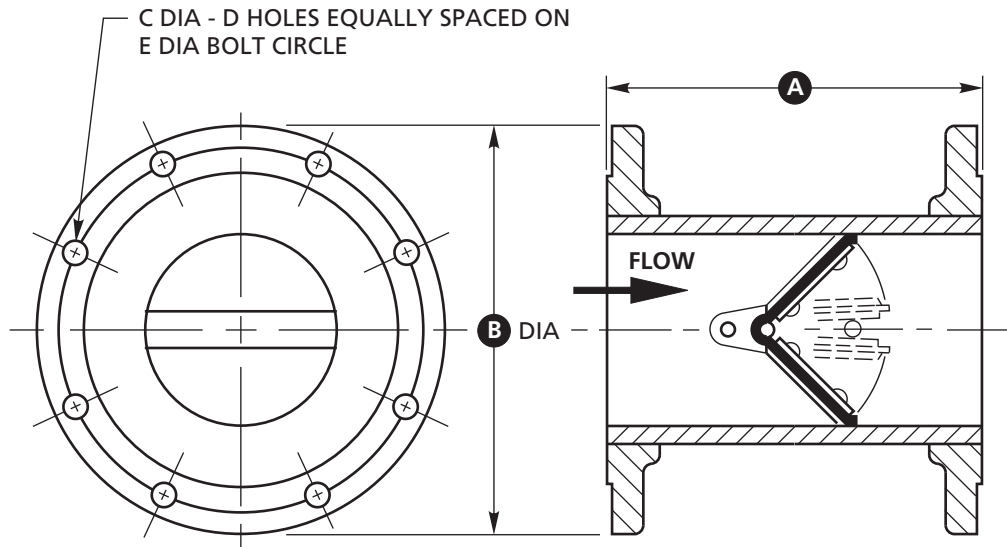
- |            |                 |
|------------|-----------------|
| • Buna-N   | -60°F to 225°F  |
| • Neoprene | -40°F to 225°F  |
| • EPDM     | -40°F to 300°F  |
| • Viton    | -20°F to 400°F  |
| • Silicone | -100°F to 500°F |

\* This temperature range is for general guidance. The figures may vary with application.

#### SPRING MATERIAL

- 302 Stainless Steel

## TECHNOCHECK STYLE 5107 WITH 300# FLANGED ENDS



### GENERAL DIMENSIONS FOR STYLE 5107

Valve Size inches	A	B	C	D	E
1	4 1/2	4 7/8	3/4	4	3 1/2
1 1/4	4 1/2	5 1/4	3/4	4	3 7/8
1 1/2	5 1/8	6 1/8	7/8	4	4 1/2
2	5 1/8	6 1/2	3/4	8	5
2 1/2	5 5/8	7 1/2	7/8	8	5 7/8
3	6	8 1/4	7/8	8	6 5/8
4	6 5/8	10	7/8	8	7 7/8
5	7 1/4	11	7/8	8	9 1/4
6	8	12 1/2	7/8	12	10 5/8
8	10 1/2	15	1	12	13
10	12 1/2	17 1/2	1 1/8	16	15 1/4
12	14 1/2	20 1/2	1 1/4	16	17 3/4
14	16 1/2	23	1 1/4	20	20 1/4
16	18 1/2	25 1/2	1 3/8	20	22 1/2
18	20 3/4	28	1 3/8	24	24 3/4
20	24	30 1/2	1 3/8	24	27
24	27	36	1 5/8	24	32
30	35	43	1 7/8	28	39 1/4
36	41	50	2 1/8	32	46
42	47	57	2 1/8	36	52 3/4

All Dimensions in inches.

### STANDARD MODELS & MATERIALS

Style	Body	Internals	Cold Working Pressure (psi)
5107	Steel	Plated Steel	300
5107-316	316 Stainless Steel	316 Stainless Steel	300

Standard Elastomer: Buna-N

Consult Factory for Materials, Sizes and Pressure Ratings Not Shown.

### OPTIONAL MATERIAL SELECTION

#### Internal Materials

- Aluminum
- Brass
- 316 Stainless Steel
- Plated Steel

#### SEALING MEMBER MATERIALS

Material	Temperature Range*
• Buna-N	-60°F to 225°F
• Neoprene	-40°F to 225°F
• EPDM	-40°F to 300°F
• Viton	-20°F to 400°F
• Silicone	-100°F to 500°F

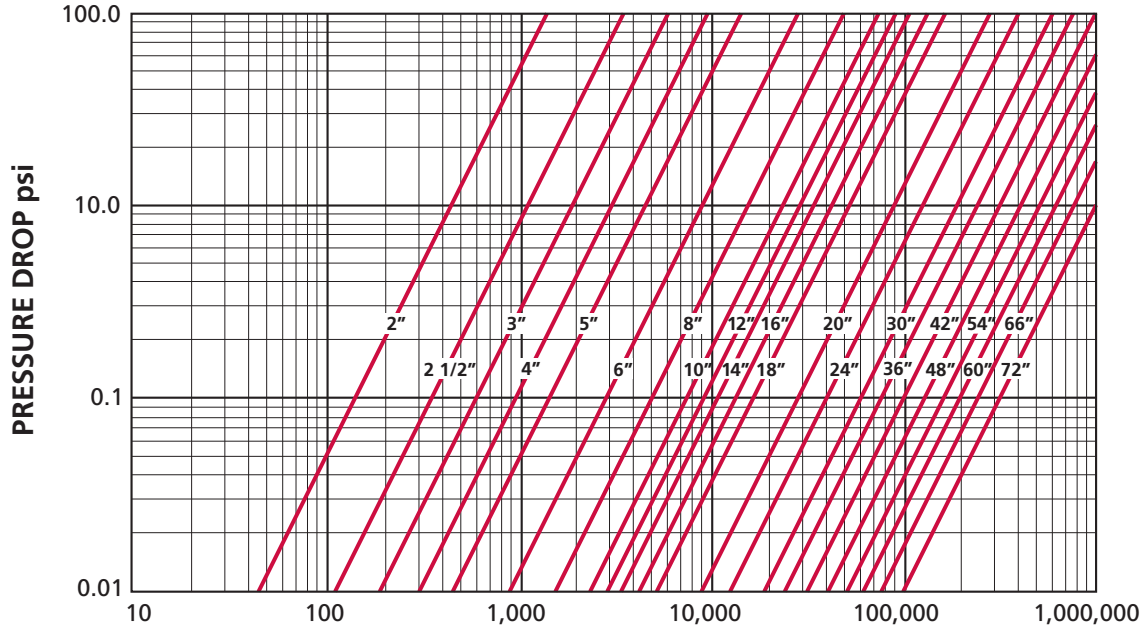
\* This temperature range is for general guidance. The figures may vary with application.

#### SPRING MATERIAL

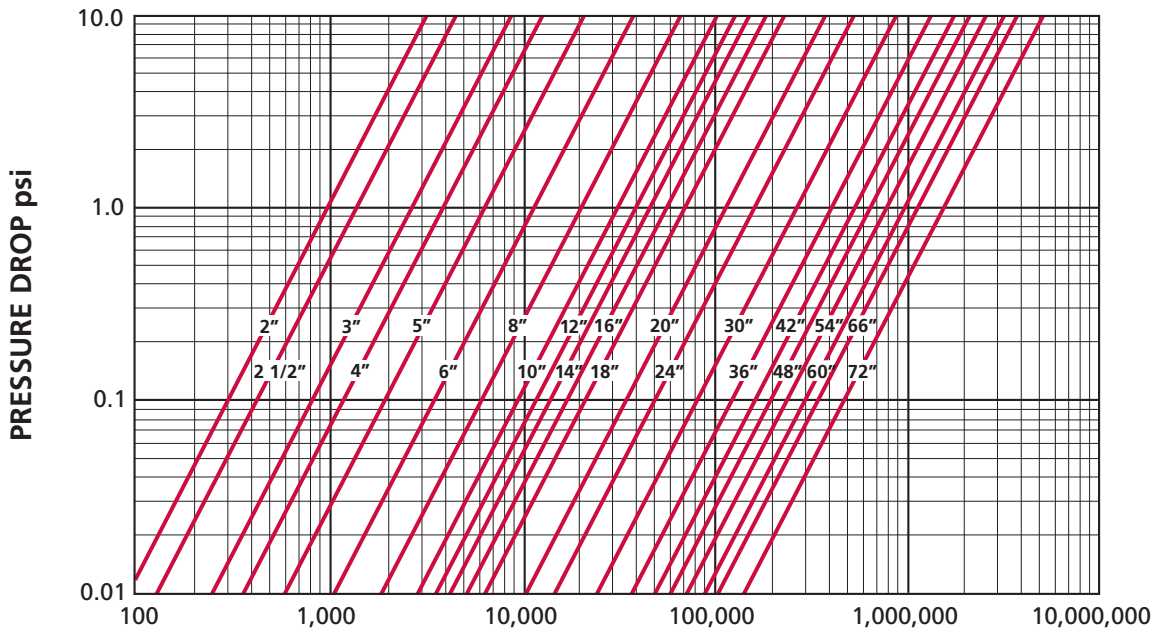
- 302 Stainless Steel

**TECHNO FULL FLANGED CHECK VALVES**

**PRESSURE DROP CHARTS FOR WATER AND AIR SERVICE**



**FLOW OF WATER AT 70° IN G.P.M.**



**AIR FLOW AT 70° IN S.C.F.M.**

## TECHNO FULL FLANGED CHECK VALVES

### TECHNO ALSO MANUFACTURES THESE MULTI PURPOSE CHECK VALVES:

- Metal Hinged, Wafer Style
- Elastomer Hinged, Metal & Plastic, with the following End Connections:
  - Male Threaded
  - Flanged
  - Wafer
  - Grooved
  - Plain
  - Combination
  - Special
- Deep Well, Female Threaded
- Exi-Check Increaser / Decreaser, Flanged
- Swing, Wafer Style
- Tilting Disc, Wafer Style

### CERTIFICATIONS



ISO 9001 CERTIFIED



## TRADEMARK INFORMATION

TECHNO™ is a registered trademark which is owned by Cameron.

This document contains references to registered trademarks or product designations, which are not owned by Cameron.

<b>Trademark</b>	<b>Owner</b>
TEFLON	E.I. DuPont De Nemours & Company
VITON	E.I. DuPont De Nemours & Company

**VALVES & MEASUREMENT**

3250 Briarpark Drive, Suite 300  
Houston, Texas 77042  
USA Toll Free 800 323 9160

For the most current contact and location information go to: [www.c-a-m.com/valvesandmeasurement](http://www.c-a-m.com/valvesandmeasurement)