

MODEL NO.

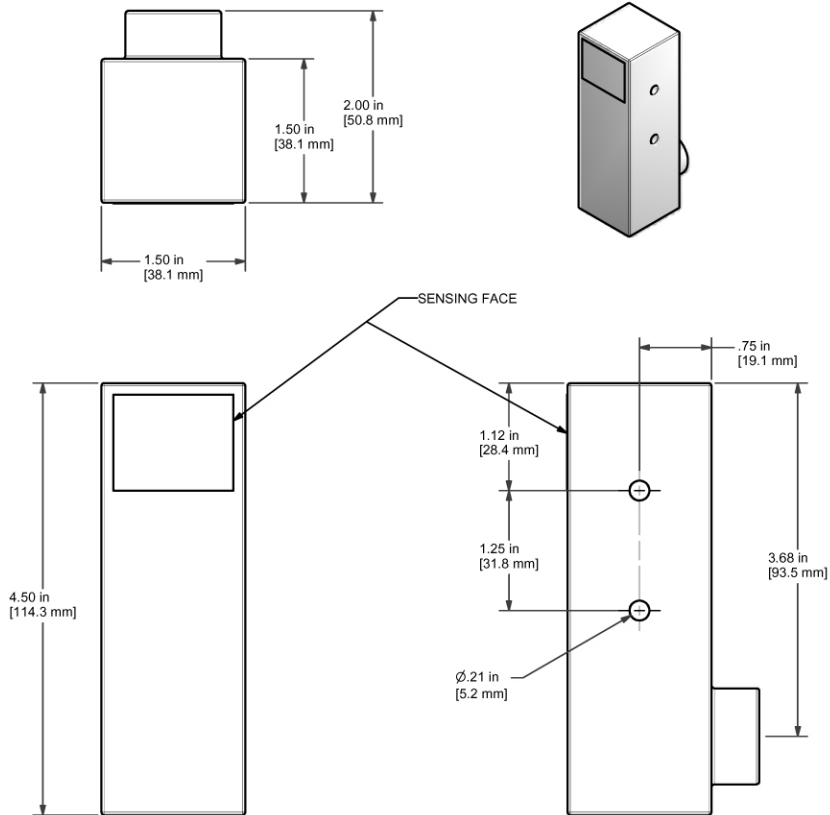
11-11110-00

PRODUCT LINE

GO Switch Leverless Limit Switches

SPECIFICATIONS

Model	GO Switch Model 11- 1-1/2" square x 4-9/16" overall
Contact Form	SPDT (Form C) contacts; 10A/120VAC,3A/24VDC
Sensing Range	Standard sensing - approx. 10mm (3/8") side sensing
Outlet Position	1/2" NPT conduit outlet behind sensing area
Enclosure Material	Brass - coated with flat black lacquer
Approvals	CSA/FM CI I, Div 2, Grps A-D; CI II, Div 2, Grps F&G; CI III Terminal block
Wiring Options	Terminal Block
Temperature Rating	-40 °C - 176 °C



Current as of Mar 24, 2011 - subject to change without notice.



TopWorx, Inc. (502) 969-8000 ph.
 3300 Fern Valley Rd. (502) 969-5911 fax
 Louisville, KY 40213 www.topworx.com