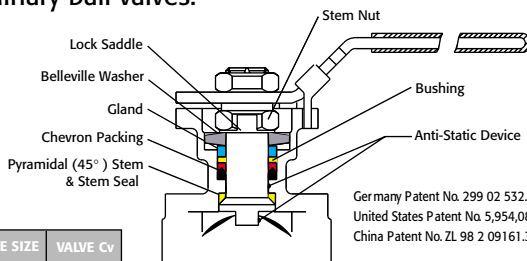




Triac 88 Series 3 -Piece Ball Valves feature a direct mount automation pad. The high quality investment castings feature a fully machined bore. The superior live-loaded packing system is accomplished with Belleville washers, "V" ring packing and a unique primary pyramidal stem seal. This advanced sealing system provides for protection against stem leaks experienced by ordinary ball valves.



| VALVE SIZE | VALVE Cv |
|------------|----------|
| 1/4" | 7 |
| 3/8" | 9 |
| 1/2" | 12 |
| 3/4" | 32 |
| 1" | 56 |
| 1-1/4" | 85 |
| 1-1/2" | 125 |
| 2" | 240 |
| 2-1/2" | 380 |
| 3" | 557 |
| 4" | 835 |

Reinforced TFE seats are standard, but various options are available for seat materials. The 50/50 seat option is excellent for services that call for higher temperatures and more difficult applications including steam. Call us for details.

Easy to Automate!

See automated data sheets for pre-sized assemblies



Pneumatic



Electric

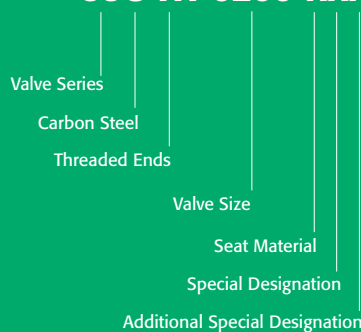


Series 88
HIGH PERFORMANCE
3-Piece Design

Full Port 1500/2000 psi
Stainless or Carbon Steel Body
Direct Mounting Pad
Threaded, Socket Weld or Butt Weld
Sizes 1/4" – 4"

HOW TO ORDER
MANUAL VALVES

SAMPLE PART #
88C-TH-0200-XXX



See part number matrix for itemized options



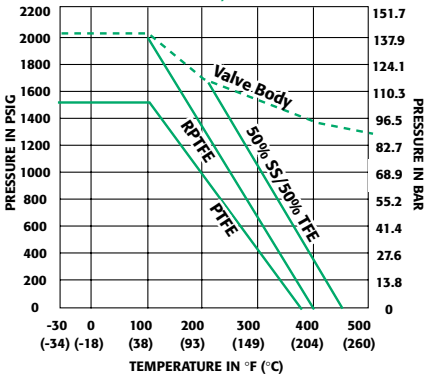
Triac Division
11363 Deerfield Rd.
Cincinnati, Ohio 45242
(513) 247-5465
FAX (513) 247-5462
e-mail: sales@a-tcontrols.com
www.a-tcontrols.com

Series 88

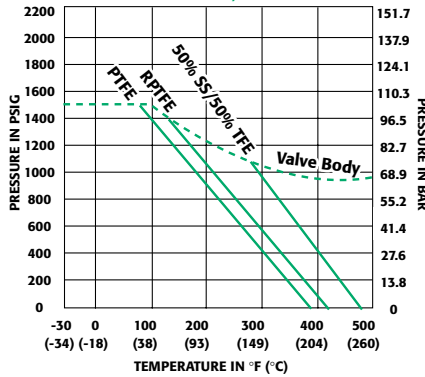
Heavy Duty, Full Port 3-Piece Ball Valve ISO 5211 Direct Mount

1500 & 2000 psi
1/4" to 4"

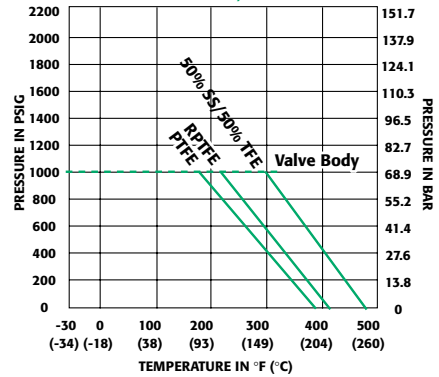
Pressure vs. Temperature Chart
for Valve 1/4" to 1"



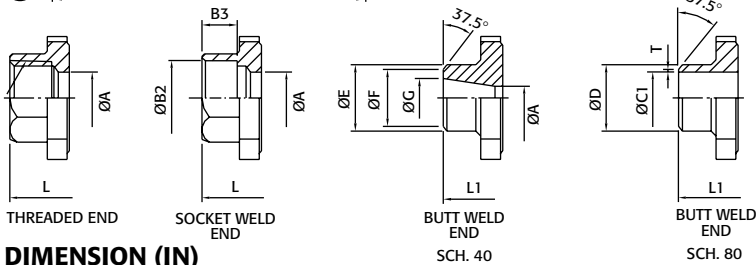
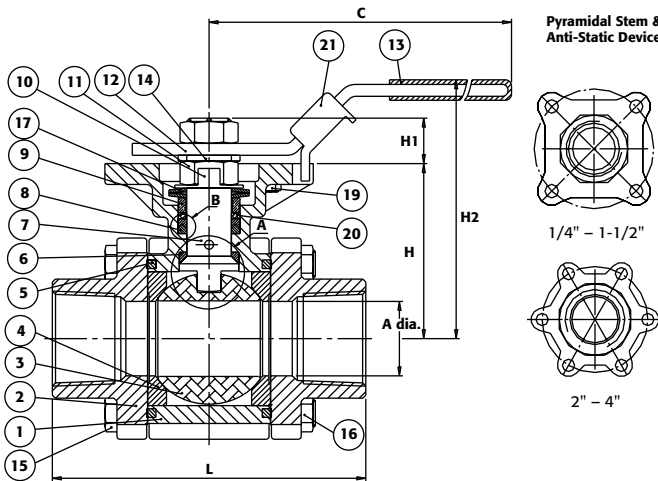
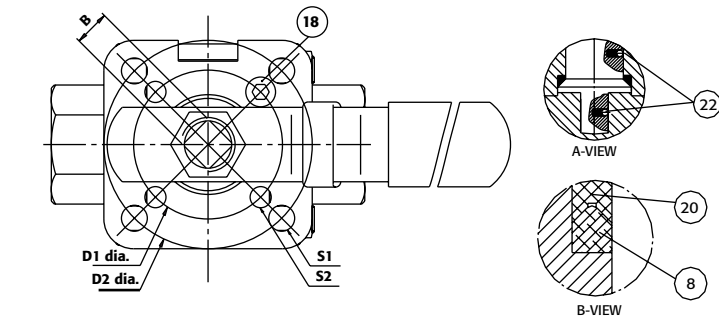
Pressure vs. Temperature Chart
for Valve 1-1/4" to 2"



Pressure vs. Temperature Chart
for Valve 2-1/2" to 4"



NOTE: Dotted line shows the rating for valve body. Solid line shows the rating for valve seat. Both ratings need to be consulted when determining the limitation of the valve for specific application.



DIMENSION (IN)

| SIZE | A dia. | B | C | D1 | D2 | E dia. | F dia. | G dia. | H | H1 | H2 | S1 dia. | S2 dia. | L | L1 | B2 dia | B3 | C1 dia | D dia | T | MTG PAD | LBS. |
|--------|--------|-------|-------|------|------|--------|--------|--------|------|------|------|---------|---------|------|------|--------|------|--------|-------|------|---------|------|
| 1/4" | 0.45 | 0.354 | 5.47 | 1.65 | 1.97 | N/A | N/A | N/A | 1.66 | 0.25 | 3.00 | 0.28 | 0.28 | 2.95 | 2.95 | 0.55 | 0.39 | 0.45 | 0.85 | 0.13 | F04/F05 | 2.5 |
| 3/8" | 0.50 | 0.354 | 5.47 | 1.65 | 1.97 | N/A | N/A | N/A | 1.66 | 0.25 | 3.00 | 0.28 | 0.28 | 2.95 | 2.95 | 0.69 | 0.39 | 0.50 | 0.85 | 0.11 | F04/F05 | 2.5 |
| 1/2" | 0.59 | 0.354 | 5.47 | 1.65 | 1.97 | 0.85 | 0.71 | 0.62 | 1.66 | 0.25 | 3.00 | 0.28 | 0.28 | 2.85 | 2.95 | 0.85 | 0.39 | 0.59 | 0.85 | 0.06 | F04/F05 | 2.5 |
| 3/4" | 0.79 | 0.354 | 5.47 | 1.97 | 2.76 | 1.07 | 0.94 | 0.83 | 1.83 | 0.33 | 3.20 | 0.34 | 0.28 | 3.36 | 3.54 | 1.07 | 0.51 | 0.79 | 1.07 | 0.06 | F05/F07 | 3.5 |
| 1" | 0.98 | 0.433 | 6.50 | 1.97 | 2.76 | 1.34 | 1.20 | 1.05 | 2.31 | 0.41 | 3.86 | 0.34 | 0.28 | 4.15 | 4.33 | 1.34 | 0.51 | 0.98 | 1.34 | 0.06 | F05/F07 | 5.0 |
| 1-1/4" | 1.26 | 0.433 | 6.50 | 1.97 | 2.76 | 1.68 | 1.54 | 1.38 | 2.46 | 0.41 | 4.00 | 0.34 | 0.28 | 4.37 | 4.53 | 1.69 | 0.51 | 1.26 | 1.68 | 0.06 | F05/F07 | 6.5 |
| 1-1/2" | 1.50 | 0.551 | 8.46 | 1.97 | 2.76 | 1.91 | 1.77 | 1.59 | 3.11 | 0.53 | 5.04 | 0.34 | 0.28 | 5.01 | 5.10 | 1.92 | 0.51 | 1.50 | 1.91 | 0.06 | F05/F07 | 10 |
| 2" | 1.97 | 0.551 | 8.46 | 1.97 | 2.76 | 2.38 | 2.22 | 2.07 | 3.42 | 0.53 | 5.35 | 0.34 | 0.28 | 5.62 | 5.62 | 2.40 | 0.63 | 1.97 | 2.38 | 0.06 | F05/F07 | 13 |
| 2-1/2" | 2.56 | 0.748 | 10.31 | 2.76 | 4.02 | 3.00 | N/A | 2.56 | 4.28 | 0.66 | 6.60 | 0.47 | 0.39 | 7.28 | 7.28 | 2.89 | 0.63 | 2.56 | 3.00 | N/A | F07/F10 | 24 |
| 3" | 3.15 | 0.748 | 10.31 | 2.76 | 4.02 | 3.54 | N/A | 3.15 | 4.63 | 0.70 | 6.96 | 0.47 | 0.39 | 8.07 | 8.07 | 3.54 | 0.63 | 3.15 | 3.54 | N/A | F07/F10 | 32 |
| 4" | 3.94 | 0.748 | 12.28 | 2.76 | 4.02 | 4.57 | N/A | 3.94 | 5.26 | 0.66 | 7.59 | 0.47 | 0.39 | 9.45 | 9.45 | 4.54 | 0.79 | 3.94 | 4.57 | N/A | F07/F10 | 52 |

MATERIALS LIST

| NO. | PART NAME | QTY. | MATERIAL | |
|-----|--------------------|------|-----------------|--------------|
| | | | Stainless Steel | Carbon Steel |
| 1 | Body | 1 | CF8M | A216 GR. WCB |
| 2 | End Cap | 2 | CF8M | A216 GR. WCB |
| 3 | Ball | 1 | SS316 | SS316 |
| 4 | Seat | 2 | RPTFE | RPTFE |
| 5 | Joint Gasket | 2 | PTFE | PTFE |
| 6 | Stem Seals | 1 | RPTFE | RPTFE |
| 7 | Stem | 1 | SS316 | SS316 |
| 8 | Gland Packing | 2 | PTFE | PTFE |
| 9 | Gland | 1 | SS304 | SS304 |
| 10 | Stop Washer | 1 | SS304 | SS304 |
| 11 | Stem Nut | 2 | SS304 | SS304 |
| 12 | Handle | 1 | SS304 | SS304 |
| 13 | Handle Cover | 1 | Vinyl | Vinyl |
| 14 | Stem Washer | 1 | SS304 | SS304 |
| 15 | Bolt | * | SS304 | SS304 |
| 16 | Bolt Nut | * | SS304 | SS304 |
| 17 | Bellville Washer | 2 | SS301 | SS301 |
| 18 | Stop Pin | 1 | SS304 | SS304 |
| 19 | Stop Nut | 1 | SS304 | SS304 |
| 20 | Bushing | 1 | † | † |
| 21 | Locking Device | 1 | SS304 | SS304 |
| 22 | Anti-Static Device | 2 | SS304 | SS304 |

VALVE OPERATING TORQUES

| | |
|--------|-----|
| 1/4" | 45 |
| 3/8" | 45 |
| 1/2" | 62 |
| 3/4" | 89 |
| 1" | 127 |
| 1-1/4" | 160 |
| 1-1/2" | 186 |
| 2" | 234 |
| 2-1/2" | 520 |
| 3" | 555 |
| 4" | 635 |

NOTE: RTFE Seats. Consult factory when using other seat material.

* 1/4" - 1-1/2" - 4 pcs.

* 2" - 4" - 6 pcs.

† 25% Glass Fiber Filled and PTFE

NOTE: Materials designated in the material list are our standard materials. Other options are available for higher pressure and temperature rating (see pressure vs. temperature chart for different seat options).