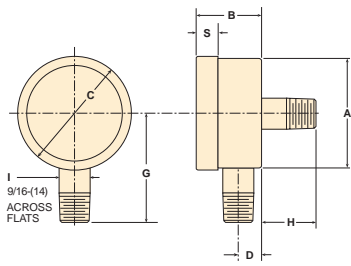
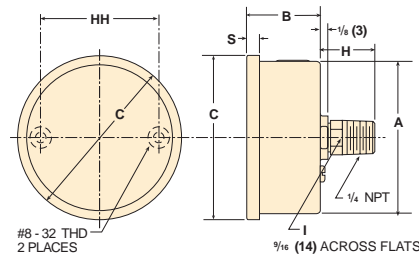


### Case Type 1008 – 40mm & 50mm

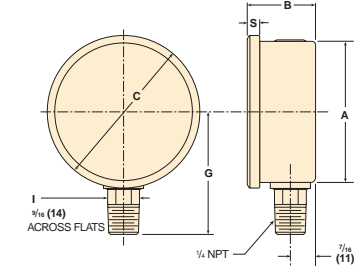


40/50mm lower and back connection

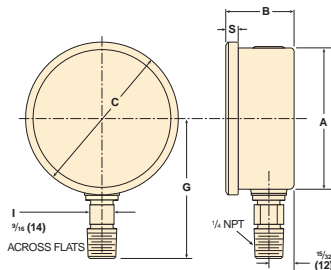
### Case Type 1008 – 63mm & 100mm



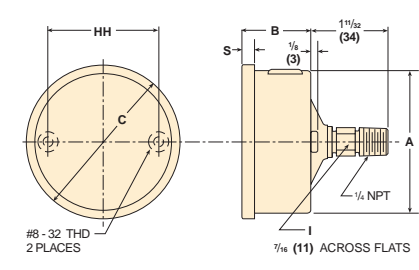
63/100mm 1008A/AL back connection



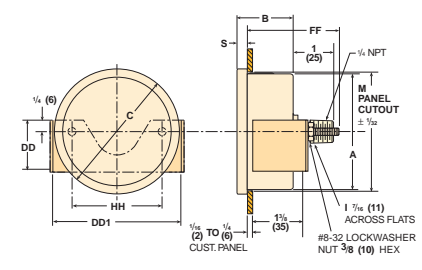
63/100mm 1008A/AL lower connection



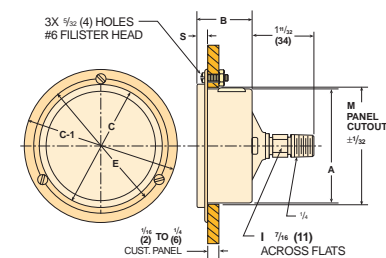
63/100mm 1008S/SL lower connection



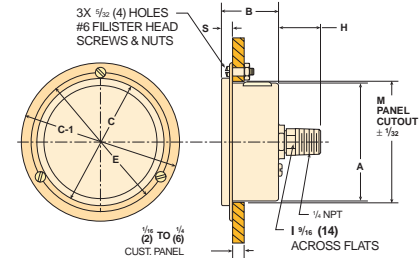
63/100mm 1008S/SL back connection



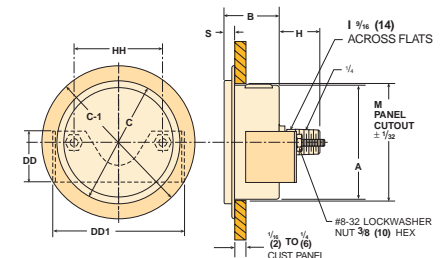
63/100mm 1008A/AL back connection (XUC) U-clamp



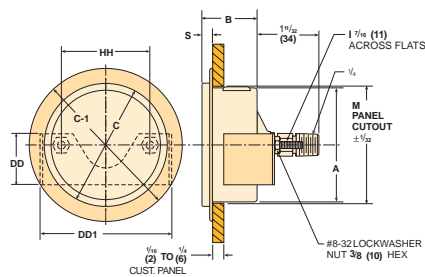
63/100mm 1008S/SL back connection (XFF) Front Flange



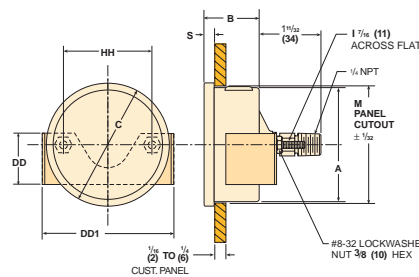
63/100mm 1008A/AL back connection (XFF) Front Flange



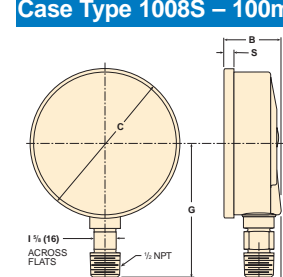
63/100mm 1008A/AL back connection (XRF) Retrofit Front Flange



63/100mm 1008S/SL back connection (XRF) Retrofit Front Flange



63/100mm 1008S back connection (XUC) U-clamp



100mm 1008S/SL lower connection

Gauge Size																			Weight		
	A	A-1	B	C	C-1	D	DD	DD1	E	FF	G	G-1	H	HH	I	J	L	M	S	Dry	LF
(40) 1½	(41) 1⅝		(25) 31/32	(42) 121/32		(10) 3/8					(43) 111/16		(20) 25/32		(14) 9/16				(8) 5/16	.08kg .17#	.10kg .22#
(50) 2	(52) 27/16		(29) 17/8	(53) 23/32		(10) 3/8					(48) 17/8		(24) 15/16		(14) 9/16				(10) 3/8	.12kg .26#	.17kg .37#
(63) 2½	(63) 2½		(31) 17/32	(69) 223/32	(86) 33/8	(19) 3/4	(29) 17/8	(73) 27/8	(79) 31/8	(46) 113/16	(55) 25/32	(64) 2½	(23) 29/32	(49) 115/16	(11) 7/16	(4) 5/32	(71) 23/16	(64) 217/32	(6) 1/4	.11kg .25#	.21kg .47#
(100) 3½	(100) 315/16	(94) 323/32	(31) 17/32	(106) 45/32	(133) 57/32	(22) 7/8	(29) 17/8	(106) 43/16	(116) 49/16	(46) 113/16	(86) 33/8	(81) 33/16	(86) 33/8	(76) 3	(11) 7/16	(6) 1/4	(97) 33/16	(101) 331/32	(6) 1/4	.18kg .40#	.42kg .94#
(100)	(100) 315/16		(31) 17/32	(106) 45/32								(91) 35/8		(16) 5/8					(6) 1/4	.23kg .50#	.45kg .97#

Note: Dimensions in brackets ( ) are millimeters.